

# User Manual

---

## ▪ DTU-W100 3rd Gen

---



**Contents**




- 1. Important Safety Information ..... 3
  - 1.1 Read this First ..... 3
  - 1.2 Safety Instructions ..... 3
  - 1.3 User ..... 3
  - 1.4 Support and Contact Information ..... 3
  - 1.5 Anatel Information ..... 4
  - 1.6 Other Information..... 4
- 2. About Hoymiles Microinverter System ..... 4
  - 2.1 The Microinverter ..... 4
  - 2.2 The DTU ..... 4
  - 2.3 The Hoymiles Monitoring Server ..... 4
- 3. DTU Installation ..... 5
  - 3.1 System Capacity ..... 5
  - 3.2 Basic Conditions Required ..... 5
  - 3.3 Dimensions ..... 6
  - 3.4 Interface Layout ..... 6
  - 3.5 Local Install Assistant..... 6
  - 3.6 System Installation Sequence..... 7
  - 3.7 DTU Installation Procedure ..... 7
- 4. Site creation on HMP ..... 9
- 5. Customer Login ..... 9
- 6. Complete Installation Map ..... 10
- 7. Browse the Web Station..... 10
- 8. View Phone APP ..... 11
- 9. LED indicator working status description..... 12
- 10. Troubleshooting..... 12
- 11. Datasheet..... 13

# 1. Important Safety Information

## 1.1 Read this First

This manual includes important instructions for installing and maintaining the Hoymiles Data Transfer Unit (DTU).

## 1.2 Safety Instructions

Symbol	Usage
	Indicates a hazardous situation that can result in deadly electric shock hazards, other serious physical injuries, or fire hazards.
	Indicates directions which must be fully understood and followed in entirety to avoid potential safety hazards including equipment damage or personal injury.
	Indicates this points out that the described operation must not be carried out. The reader should stop, use caution, and fully understand the operations explained before proceeding.

- Note that only professionals can install or replace DTU.
- Do not try to repair DTU without Hoymiles' approval. If DTU is damaged, please send the DTU back to your installer for repairing/replacing. Disassembling DTU without Hoymiles' approval will invalidate remaining of the warranty period.
- Please read all instructions and warnings on the technical specifications carefully.
- Do not use Hoymiles products in a way that is not suggested by manufacture. Doing so may cause death or injury to persons or damage to equipment.

## 1.3 User

This manual is only for professional installation and maintenance personnel to use.

## 1.4 Support and Contact Information

If you have technical queries concerning our products, please contact your system installer or distributor. If further support is required, contact Hoymiles' support at this link.

- [www.hoymiles.com](http://www.hoymiles.com)
- Hoymiles customer service center: [service@hoymiles.com](mailto:service@hoymiles.com)

## 1.5 Anatel Information

This equipment is not entitled to protection against harmful interference and may not cause interference in duly authorized systems.

Este equipamento não tem direito à proteção contra interferência prejudicial e não pode causar interferência em sistemas devidamente autorizados.

This DTU has been tested and found to comply with the limits for Anatel Certification. The following is the Anatel logo and approval code.



04760-19-08722

## 1.6 Other Information

Product information is subject to change without notice. The user manual will be updated frequently, and please refer to Hoymiles official website at [www.hoymiles.com](http://www.hoymiles.com) for the latest version.

## 2. About Hoymiles Microinverter System

### 2.1 The Microinverter

It converts the DC output of solar modules into grid-compliant AC power. It sends the output information of PV panels and the operation data of the microinverters to the DTU, which is the hardware basis of the panel-level monitoring.

With conversion efficiency up to 96.7% and MPPT efficiency up to 99.9%, Hoymiles microinverters rank into the first class of the world's Microinverter industry.

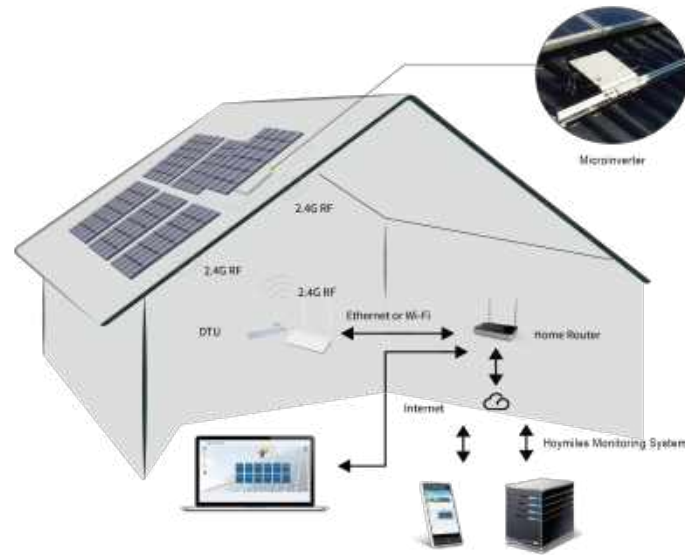
### 2.2 The DTU

The DTU is the key component in Hoymiles microinverter system. It works as the communication gateway, which operates between the Hoymiles microinverters and the Hoymiles Monitoring Server. The DTU communicates with the microinverter wirelessly via 2.4GHz Proprietary RF (Nordic), collecting the operation data of the system. Meanwhile, the DTU connects to the Internet via router and communicates with Hoymiles Monitoring Server. The microinverter system operation data will be uploaded to Hoymiles Monitoring Server via DTU.

### 2.3 The Hoymiles Monitoring Server

It collects the operation data and status of the microinverters in the system and provides the panel-level

monitoring for the users and maintenance staff. The following diagram shows the Hoymiles Microinverter system.



### 3. DTU Installation

#### 3.1 System Capacity

The DTU is capable of monitoring up to 99 pieces of single unit or 49 pieces of two in one unit or 24 pieces of four in one unit. If the communication between the DTU and microinverter caused by the installation conditions, the number of PV modules that the DTU can monitor may be reduced.

#### 3.2 Basic Conditions Required

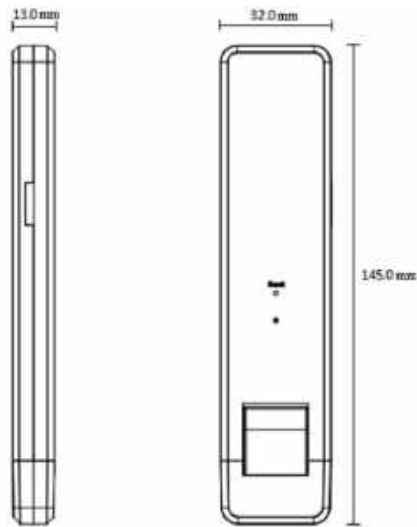
Before installing the DTU, ensure the site meets the following requirements:

- Install close to the router.
- Stable Internet reception.
- The straight distance between DTU and Microinverter shall be less than 5 meters.
- The location should be one meter above the ground, 0.8 meters away from the corner.

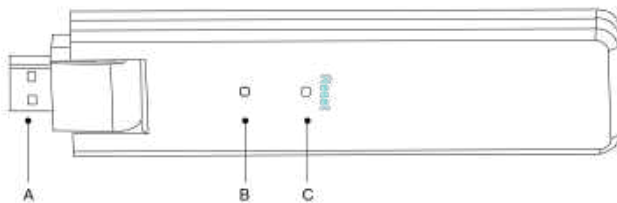
The environmental requirements for DTU installation:

- Away from dust, liquid, acidic, or corrosive gas.
- Temperature is between -20°C and 55°C

### 3.3 Dimensions



### 3.4 Interface Layout



Item	Description
A	USB Connector
B	Status Indicator
C	Reset Bottom

### 3.5 Local Install Assistant

Local Install Assistant is a new function integrated with DTU-W100 3rd Gen, please download the Installer App (for installer/distributor use only) first.



DTU-W100 has improved from the previous generation of DTU product, and developed with this new function that allows installer:

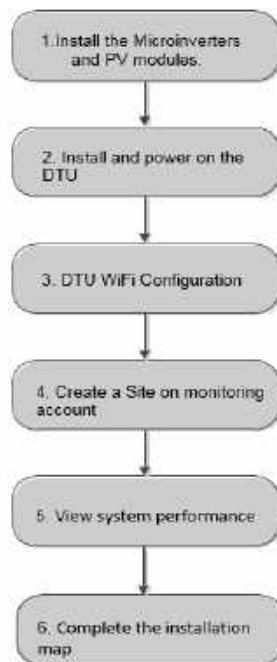
- A. One step to complete the WiFi configuration;
- B. Station overall Inverters status indication allows the installer to see how many MI under this DTU is working properly (and the details for each MI) and how many is abnormal (and the details for each MI) with one glance of eyes;
- C. Add the Connection status, which will display the signal strength between each MI with connected DTU, so that installer can adjust the DTU installation location accordingly. This function will simplify the DTU installation, and avoid the second visit for installer due to the poor connection

between DTU and certain MI.

**Note:** Please refer to “Hoymiles Local Install Assistant Technical Note” for more details.

### 3.6 System Installation Sequence

The DTU is capable of monitoring up to 99 pieces of single unit or 49 pieces of two in one unit or 24 pieces of four in one unit.



### 3.7 DTU Installation Procedure

#### (1) Install the PV Modules and microinverters

Please refer to the Microinverter’s Manual or Quick Installation Guide for the detail installation steps.

#### (2) Locate the DTU

The maximum communication distance of Hoymiles DTU is 150m in open space. The walls, roofs, or other obstacles in between will affect the signal and reduce the communication distance in the real installation.

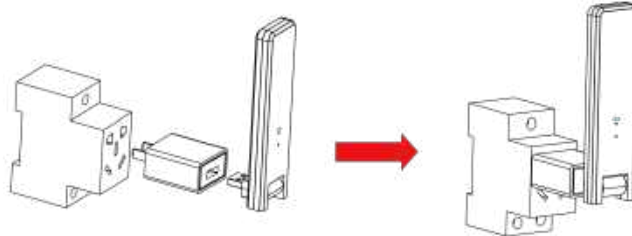
The range of signal reduction for possible obstacles at the site has been shown below:

Material	Relative signal range reductions
Wood/Glass	0-10%
Stone/Pressed cardboard	10%-40%
Reinforced concrete (reduction increases with the amount of reinforcement)	10%-90%
Metal	Up to 100%

Therefore, the DTU shall be placed as close to the microinverters as possible at the site to ensure good communication between DTU and microinverters.

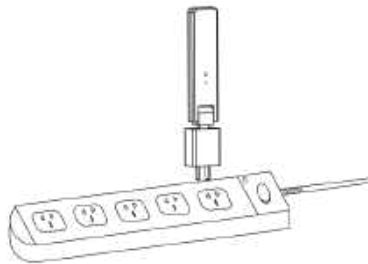
### (3) DTU Installation

a. Connect the DTU to the adapter and plug it into the wall socket. (Figure 1)



**Figure 1**

b. If using Power Strip, please make sure it is placed at least 1 meter above the ground and try to install the DTU 90 degrees vertical to the ground as much as possible (figure 2).



**Figure 2**

**Note :** Please do not install the DTU direct above the metal or concrete to prevent the signal dilution.

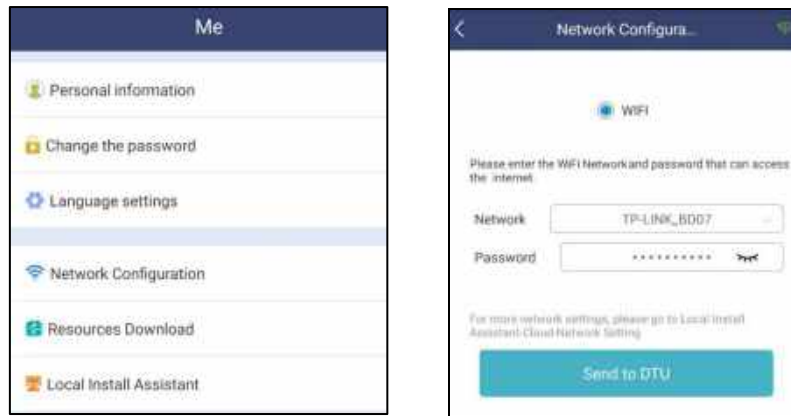
### (4) Start Procedure

Once the DTU is powered on, the red, green and blue lights will flash every one second in turns for 30 seconds.

### (5) WiFi Configuration

Use the smart phone/tablet open the Installer App and login. Approach to “Me” on the bottom of the page and then “Network Configuration”. And input the house router’s Network name and password, click “Send to DTU” to complete the WiFi configuration.





#### 4. Site creation on HMP

- A. Install Hoymiles Installer APP by searching “Hoymiles” at the App Store (IOS) or Play Store (Android).
- B. Open the APP and login in with your installer account name and password. If you are a new installer with Hoymiles, please apply an Installer account from your distributor in advance.
- C. Add Station, select the “Station” tab on the bottom, then select “⊕” on the right top side of the page.
- D. Select “Quick” for Single-DTU and “Profession” for Multi-DTU.
- E. Please fill in the station details accordingly, and press “Next” after completed.
- F. Press “Add DTU ID”, scan the DTU ID (or you can manually input ID) and press “Next” after complete.
- G. Click “Start binding” and choose the angle and tilt base on the installation.
- H. Scan the Microinverter ID (or you can manually input the ID) and click the tick after completing each ID input. Press “Finish” once all Microinverter ID has been input.
- I. Disable the Scan function on the top of the right-hand side and design the Layout base on the installation. Click the tick box on the top of the right-hand side, and then select “Next” after completing the design.
- J. Upload a picture of the site and select “Finish” to complete the site creation.
- K. The new site will appear on the Station list from the Installer account.
- L. Please click the “Networking” button after the power station is created.
- M. Please wait about 30 minutes, the station will show online, and all the MI-IDs are found.

#### 5. Customer Login

- A. Please download the End User App. You can search “Hoymiles” at the App Store (IOS) or Play Store (Android).
- B. Log in with the Password and Username that has been set up by Installer on the previous step (Section 6 step e), and press “Login”.
- C. Customers will able to view all details once the data start to upload, normally it will need around 30 minutes for the first data coming through.
- D. Customers can also view the Microinverter generating details via accessing the HMP monitoring platform website at <https://world.hoymiles.com>.





### 8. View Phone APP

Download mobile phone APP by search “Hoymiles” at App Store (IOS) or Play Store (Android), log in with customer/installer account name and password, all installed Microinverters operating details will be able to view from there.



## 9. LED indicator working status description

Red Light	Description
Flashes every 1 second	DTU disconnect WiFi
Flashes every 0.5 seconds	DTU disconnect with server
Blue Light	Description
Flashes every 1 second	No ID
Flashes every 0.5 seconds	Received data From server
Green Light	Description
Flashes every 0.5 seconds	The search ID is incomplete
Lights up constantly	Normal
RED+GREEN+BLUE	Description
Each color flashes once every 1 second	Power on
Each color flashes twice every 1 second	Firmware upgrade

## 10. Troubleshooting

Indicator	Status	Description	Solution
Red	LED flash in Red every 1 second	DTU no ID inside and disconnect with Wi-Fi	<ul style="list-style-type: none"> <li>● Check the distance between router and DTU, if it's over the range (refer to chapter 3.5 point 2)</li> <li>● Check the distance between router and DTU, if it's over the range (refer to chapter 3.5 point 2)</li> <li>● Double-check if the house router's password has been input correctly during the setting</li> <li>● Use other device connect with the house router and make sure there is an effective reception</li> <li>● Try to connect with the hot spot from the phone to see if any data is uploading successfully</li> </ul>
	LED lights up in Red constantly	W100 with ID inside but no Wi-Fi connection	
	LED flashes in Red every 0.5 seconds	DTU disconnect with server	
Blue	LED lights up in Blue constantly:	W100 has Wi-Fi connection	<ul style="list-style-type: none"> <li>● Re-do the configuration</li> <li>● Double-check the Port and server address inside the DTU (Please contact Hoymiles Tech. Support team for the correct address)</li> </ul>
			<ul style="list-style-type: none"> <li>● Complete the site creation on APP or Monitoring platform</li> <li>● Complete networking</li> </ul>

		but without ID inside.	
	LED flashes in Blue every 1 second:	No ID	● Complete networking
Green	LED lights up in Green every 0.5 seconds:	The search ID is incomplete	● Re-locate the DTU to somewhere close to both router and Microinverter

**Note:** Network Connection:

1. Connected to Wi-Fi, the blue indicator lights up, and then you can build the power station;
2. Can't connect to Wi-Fi, the indicator lights up as red + blue alternately flashing, and then you need to connect to Wi-Fi again.

**11. Datasheet**

Model	DTU-W100
<b>Communication to Microinverter</b>	
Communication method	2.4GHz Proprietary RF (Nordic)
Maximum distance (open space)	150m
Maximum number of inverters connected	99 panels
<b>Communication to Cloud</b>	
WiFi communication standard	WiFi (802.11b/g/n)
Data upload time	15 minutes
<b>Power Supply (Adapter)</b>	
Power supply	External Adapter with USB port
Adapter input voltage/frequency	100 to 240 V AC / 50 or 60Hz
Adapter output voltage/current	5V / 2A
Power consumption	1.0W (typical), 5W(maximum)
<b>Mechanical Data</b>	
Ambient temperature range (°C)	-20°C to 55°C

Size (W×H×D)	143mm×33mm×12.5mm
Weight (KG)	0.1
A fixed way	Direct power supply
Indicator light	LED
<b>Others</b>	
Standard	EN60950 EN61000-3-2 EN61000-3-3
	FCC 15B / 15C