

S-Miles Cloud Monitoring Platform

USER MANUAL

CONTENTS

1. Introduction	03
1.1 System Composition	03
1.2 Installer & End-user App/Platform	03
1.2.1 App Download	03
1.2.2 Platform	03
2. App Settings and Data Query	04
2.1 Configure the Network of DTU	04
2.2 Change the Default Password	05
2.3 Reset the Password of DTU	06
2.4 Reconfigure the Network of DTU	06
2.5 App Local Data Query	07
3. About Monitoring Account	08
3.1 Get a Hoymiles Distributor/Installer Account	08
3.2 Log in to the S-Miles	08
3.3 Change Email and Password	09
3.4 Delete an Account	11
4. Web Page Introduction	11
4.1 Home Page	11
4.2 Plant Page	12
4.2.1 Create a Plant	12
4.2.2 Edit Plant Basic Information	15
4.2.3 Transfer a PV Plant to Another Organization	16
4.2.4 Update the Profile of Inverter	16
4.2.5 Delete a Plant	17
4.2.6 Add a Plant to Favorites	17
4.2.7 Check the Various Data of Device	18
4.3 O&M	19
4.3.1 Device Information Query	19
4.3.2 DTU Maintenance	19
4.3.2.1 Restart the DTU	20
4.3.2.2 Restore the DTU Default Settings	20
4.3.2.3 Stop the Processing Command of DTU	20
4.3.2.4 Upgrade the DTU Firmware	21
4.3.2.5 Replace the DTU	21
4.3.3 Inverter Maintenance	21
4.3.3.1 Turn on the Inverter	22
4.3.3.2 Turn off the Inverter	22
4.3.3.3 Restart the Inverter	22
4.3.3.4 Restore the Inverter Default Settings	23
4.3.3.5 Clear the History of Inverter	23
4.3.3.6 Upload the Real-time Data	23
4.3.3.7 Search the Device	24
4.3.3.8 Select the Battery Type	24

4.3.4 Alarm Query	24
4.3.5 Report Query	25
4.3.6 Grid Profile Management	25
4.4 Org & User	26
4.4.1 Organization Management	26
4.4.1.1 Create Organization	26
4.4.1.2 Organization Management	27
4.4.2 Org. User Management	27
4.4.3 Owner Management	28
5. Smart Control Settings	28
5.1 Battery Smart Control	28
5.1.1 Self-consumption Mode	28
5.1.2 Economical Mode	29
5.1.3 Full Backup Mode	31
5.1.4 Pure Off-grid Mode	31
5.1.5 Force Charge Mode	32
5.1.6 Force Discharge Mode	32
5.2 Dry Contact Configuration	33
5.2.1 Set Earth Fault Alarm	33
5.2.2 Set the Working Mode of Load	33
5.2.3 Generator Control	35

1. Introduction

The S-Miles Cloud (Hoymiles Monitoring Platform) is a smart energy storage operation monitoring and management system developed by Hoymiles specifically for distributors, installers, and end users of distributed PV power plants.

At present, the system has Installer version and End-user version, with the corresponding webpage and mobile application available.

This platform provides an easy-to-use procedure for accounts under monitoring. It enables installers to configure the monitored accounts quickly and provides them with power generation data of both plant and device, as well as detailed alarm information about the power plant regarding commissioning and diagnostics. This manual is intended to guide users in operating and managing S-Miles Cloud.

1.1 System Composition

Install the DTU, inverter, smart meter and battery before using the monitoring system. DTU is a communication gateway which is used to collect status and operation data from inverter and transmit control commands to it. At the same time, the DTU also connects to the Internet through a router and sends inverter data to the Hoymiles Monitoring Server to achieve remote control of the whole system.

1.2 Installer & End-user App/Platform

1.2.1 App Download

S-Miles Installer is a mobile application developed by Hoymiles especially for installers of distributed plants. It is committed to better performing installation and maintenance.

S-Miles End-user is a mobile application developed by Hoymiles especially for owners of distributed plants. It can absorb the operating data of plants from S-Miles Cloud.

a. Scan the QR code to download.



S-Miles Installer



S-Miles End-user

b. Search "Hoymiles" in the Google Play or App Store.



S-Miles Installer



S-Miles End-user

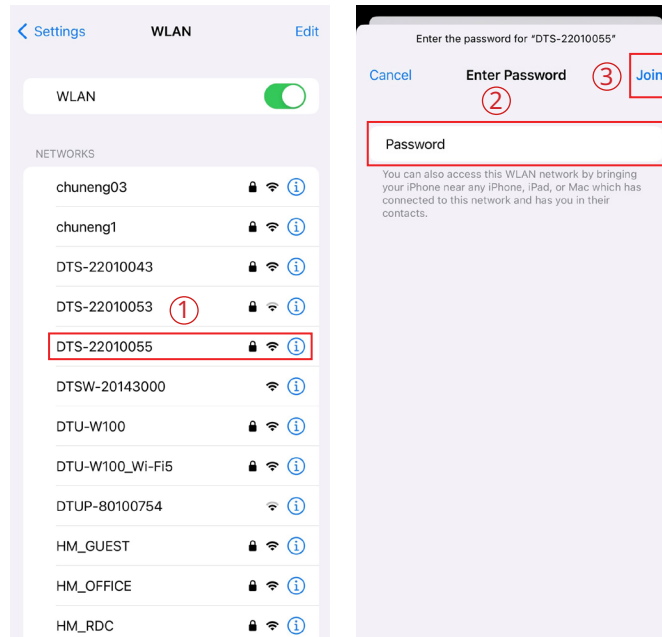
1.2.2 Platform

Open the browser, and then enter <https://global.hoymiles.com> in the address bar to enter the login interface. Please use the latest version of Google Chrome at a resolution of 1366×768 or above.

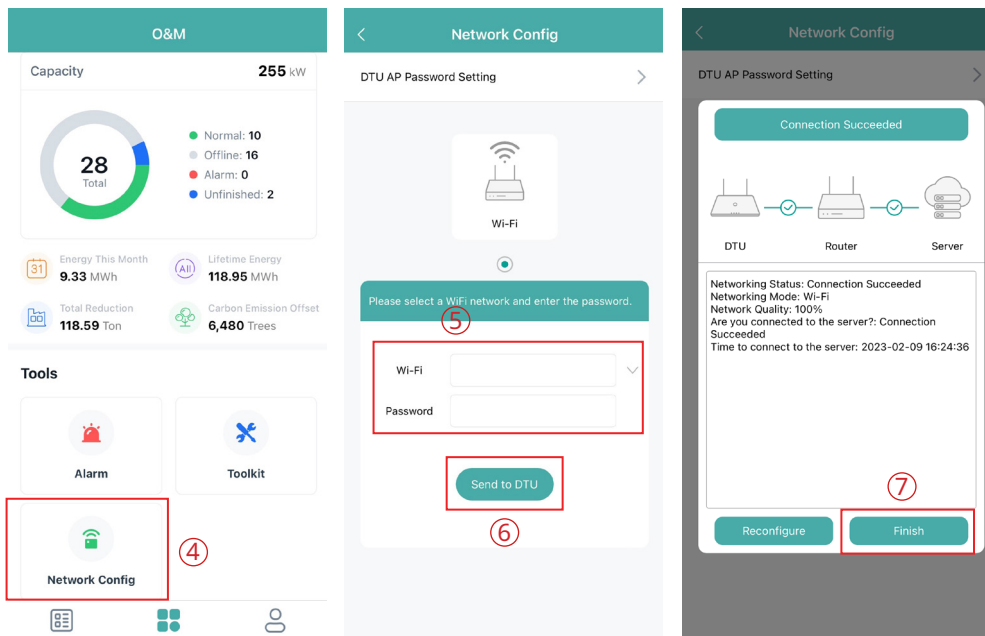
2. App Settings and Data Query

2.1 Configure the Network of DTU

a. Choose the wireless network of DTU with serial number like “DTS-22010055” and enter the default password “ESS12345” to connect DTU.

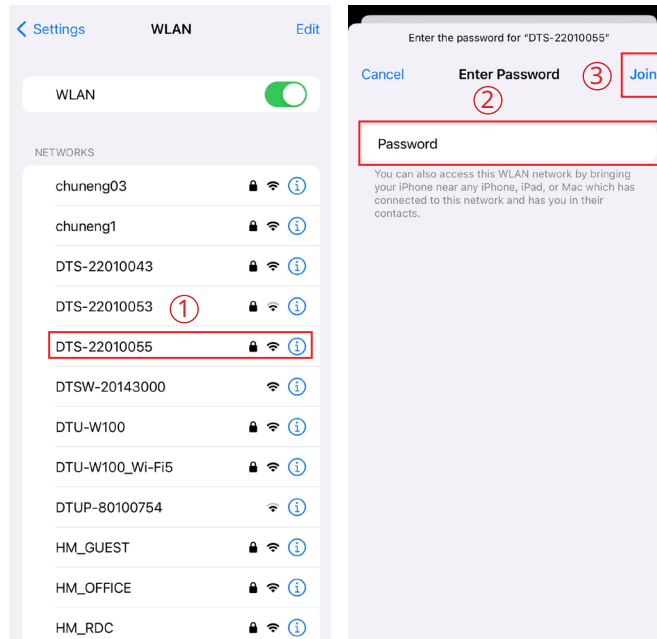


b. Open the S-Miles Installer App and choose the “O&M → Network Config”. Enter the account and password of nearby stable wireless network, click the button of “Send to DTU”, and wait until the “Connection Succeeded” appears to click “Finish”.

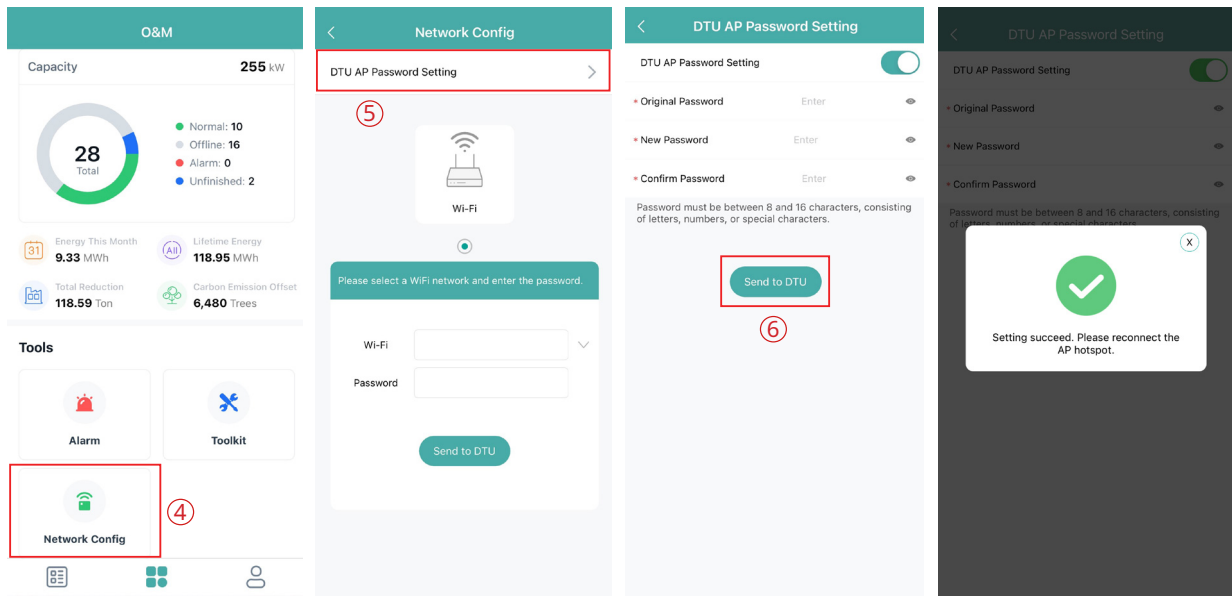


2.2 Change the Default Password

a. Choose the wireless network of DTU with serial number like “DTS-22010055” and enter the default password “ESS12345” to connect DTU.



b. Open the App and choose the “O&M → Network Config → DTU AP Password Setting”. Enter the original password and new password, click the button of “Send to DTU”, and wait until “Setting succeed” appears to reconnect the DTU.



Note:

The Wi-Fi name and password do not support special characters such as spaces.

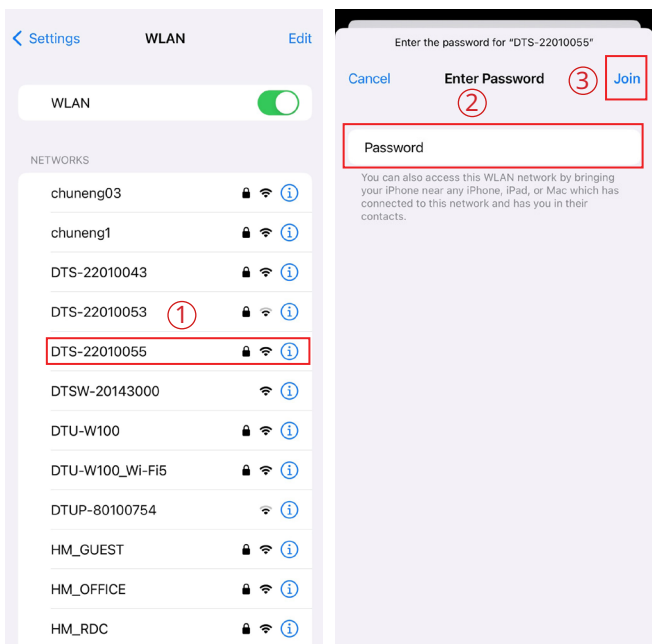
2.3 Reset the Password of DTU

When the DTU is powered on, long press the “SET” button on the left of DTU for 5 seconds (DTU indicators will be off during the long press), and then the DTU password will be restored to default password “ESS12345”.

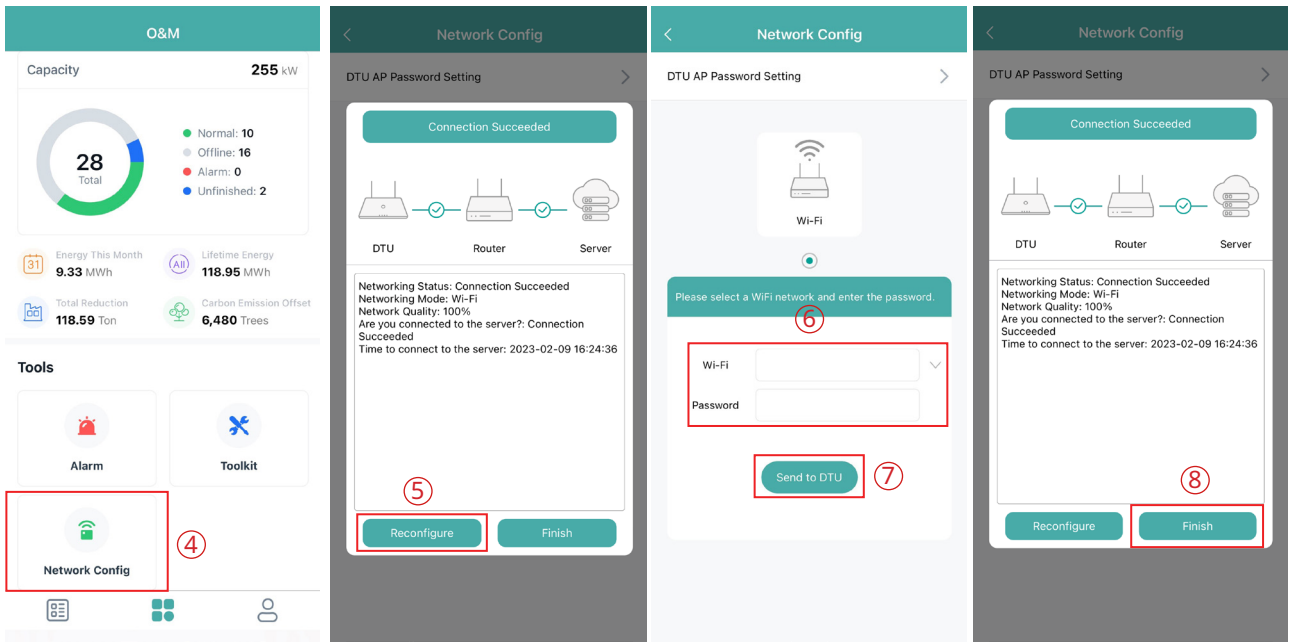


2.4 Reconfigure the Network of DTU

a. Choose the wireless network of DTU with serial number like “DTS-22010055” and enter the password to connect DTU.

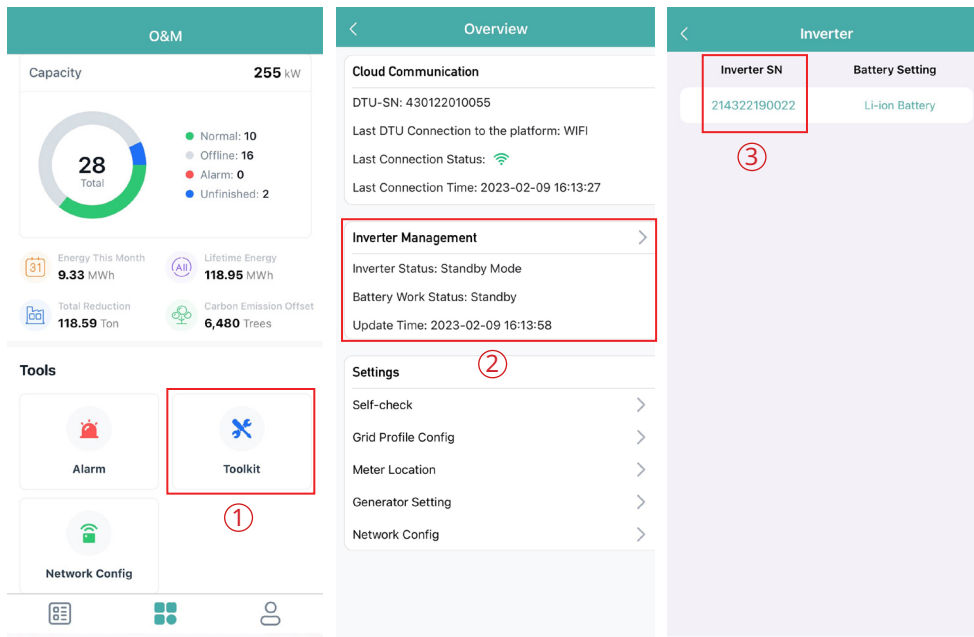


b. Open the App, choose “O&M → Network Config”, click the “Reconfigure”, and then choose a new wireless network. Enter the account and password, click the button of “Send to DTU”, and wait until “Connection Succeeded” appears to click “Finish”.

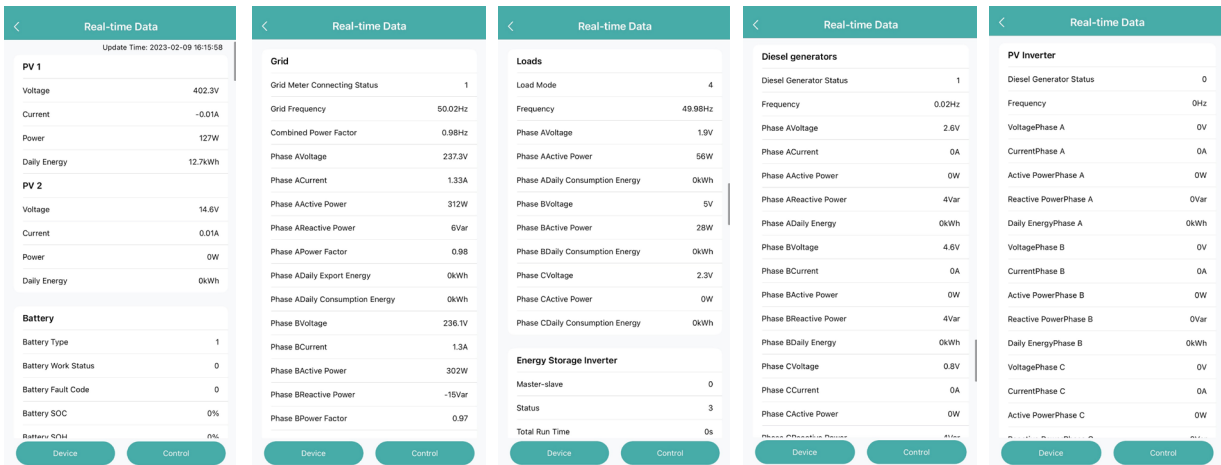


2.5 App Local Data Query

Click "Toolkit → Inverter Management", and then choose "Inverter SN".



You can check the real-time data of PV, battery, grid, load, diesel generator and PV inverter here.



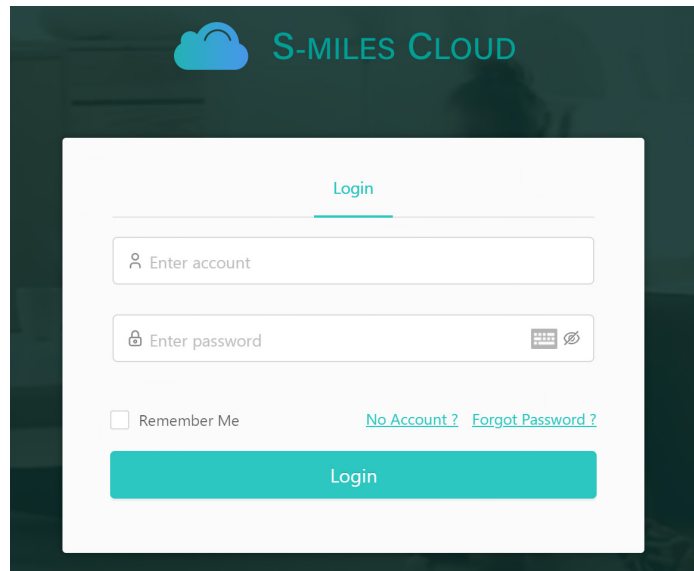
3. About Monitoring Account

3.1 Get a Hoymiles Distributor/Installer Account

- (1) If you are a new distributor, send an email to service@hoymiles.com. The Hoymiles Technical Service Center will apply for an account for you.
- (2) If you are a new installer with Hoymiles and don't have an installer account, approach your distributor to create an account for you.
- (3) If you are an installer/distributor and have an installer/distributor account, you can directly create subaccounts and plants under your existing account.

3.2 Log in to the S-Miles

Go to <https://global.hoymiles.com/> and log in to the S-Miles Cloud (Hoymiles Monitoring Platform) with your account.



Note:

- (1) The end-user only has the authority to check the plant data and perform smart control settings.
- (2) Dealers can create distributor and installer organizations, while installers can create installer organizations and organization users.
- (3) Regular users have two user-defined roles: sub-installer and normal installer. Sub-installers can only create and edit plants and issue networking command.
- (4) No matter the account you are creating is a dealer or installer organization, there are two custom roles. You can only check the plant information and are not allowed to edit the plant when the "sales (view only)" role is selected.

Name:

Contact Number:

Email:

* The email address will be used to reset the password when you forget your password. We recommend that you enter an email address.

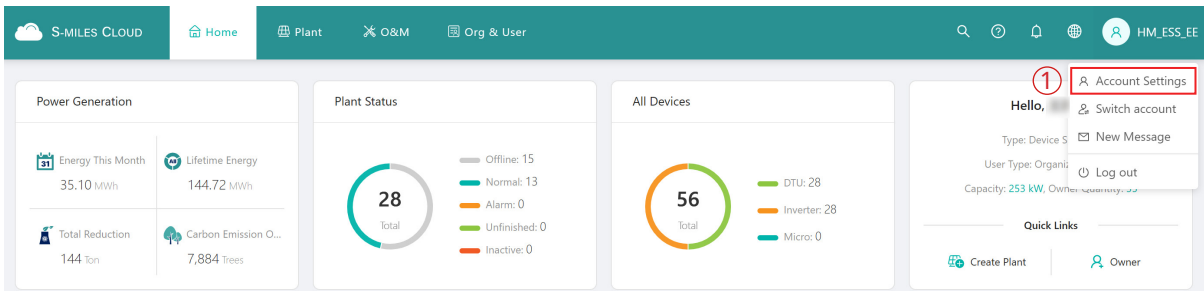
Default Role: Device Supplier

Custom Role: Sales (View only) SunSpec Modbus

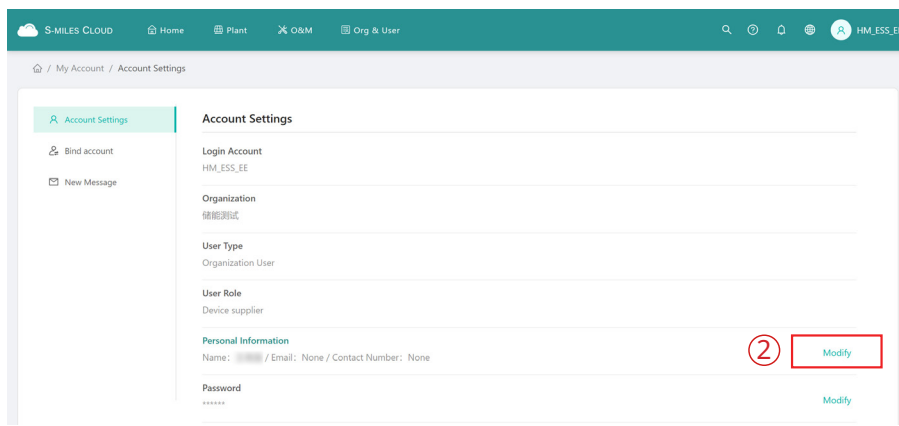
- (5) An organization can have numerous login accounts, so just select the organization name and add organization users.
- (6) Email can also be used as a login account.

3.3 Change Email and Password

- a. Enter your account and password and log in to the Hoymiles monitoring platform.
- b. Select the person icon on the top right corner and click the "Account Settings" button.



- c. Click "Modify" button on the right of personal information, enter new Email, and then click "Confirm".



Login Account: HM_ESS_EE

* Name:

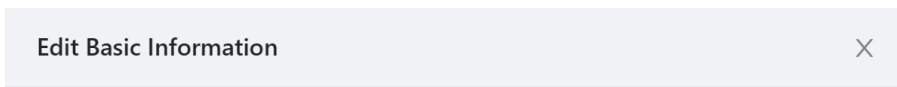
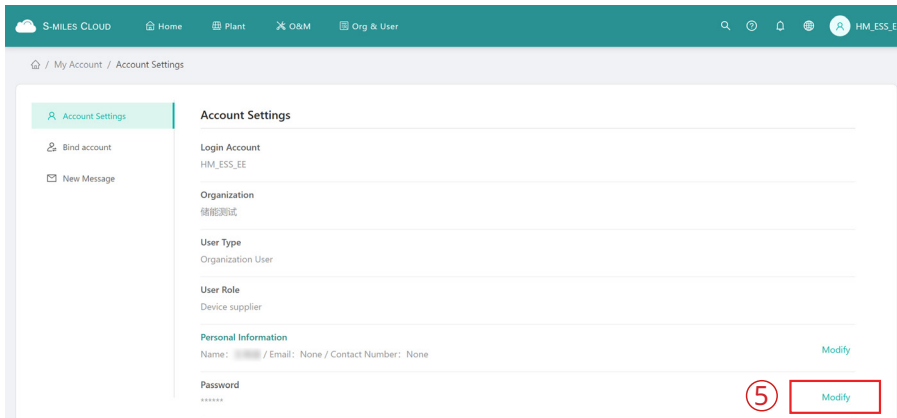
* Email:

Contact Number:

③



d. Click “Modify” button on the right of password, enter original password and new password, and then click “Confirm”.



Login Account: HM_ESS_EE

* Original Password:

* New Password:

* Confirm Password:

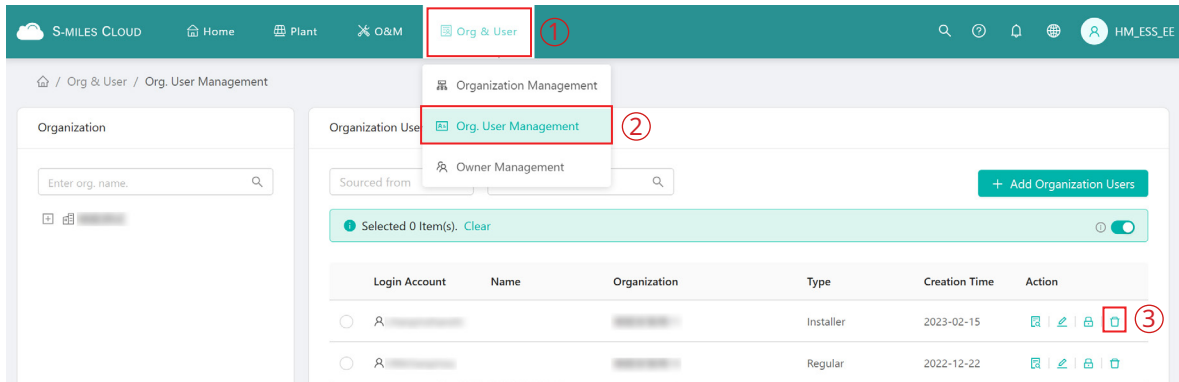
6

7

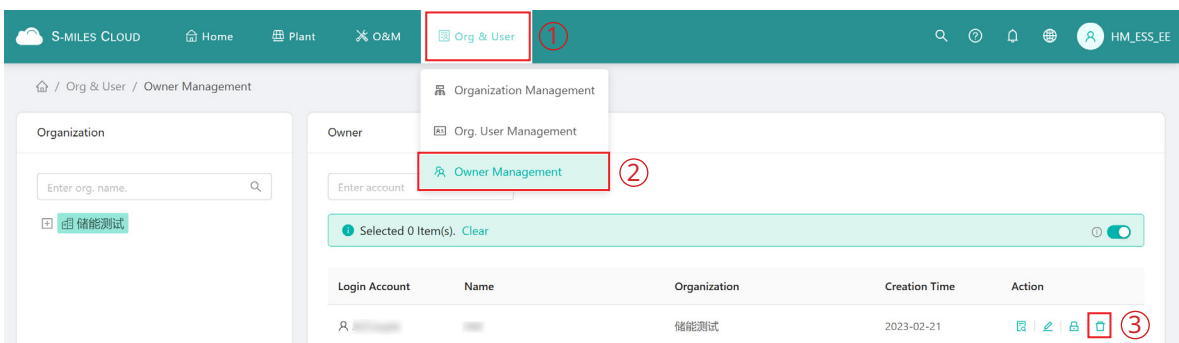
Cancel

3.4 Delete an Account

a. Select "Org. User Management" on the menu bar under "Org & User", choose the organization, and then click the "Delete" button to complete deletion.



b. Select "Owner Management" on the menu bar under "Org & User", choose the organization, and then click the "Delete" button to complete deletion.



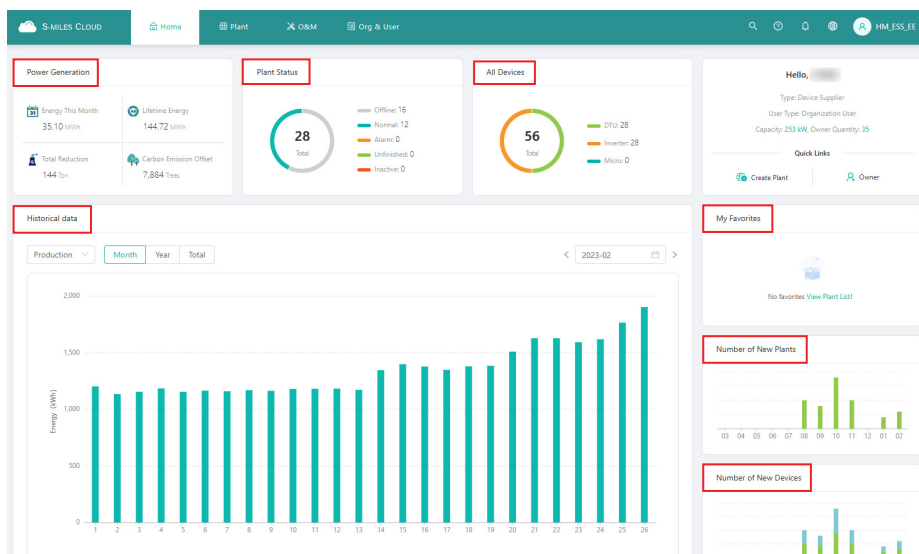
4. Web Page Introduction

The menu bar shows the main functions of S-Miles Cloud, so the user can select the corresponding pages and perform corresponding operations.



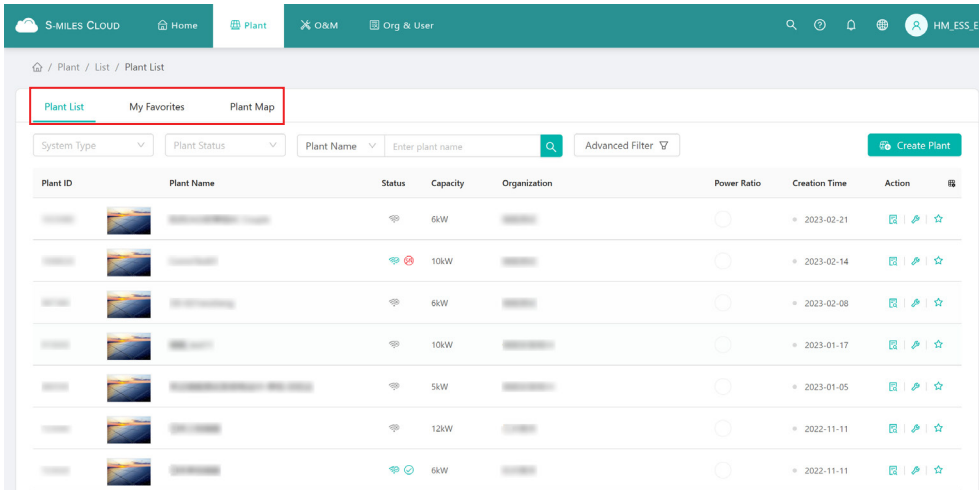
4.1 Home Page

The Home page includes the power generation, plant status, all devices, historical power generation data, number of new plants, number of new devices and your favorites.



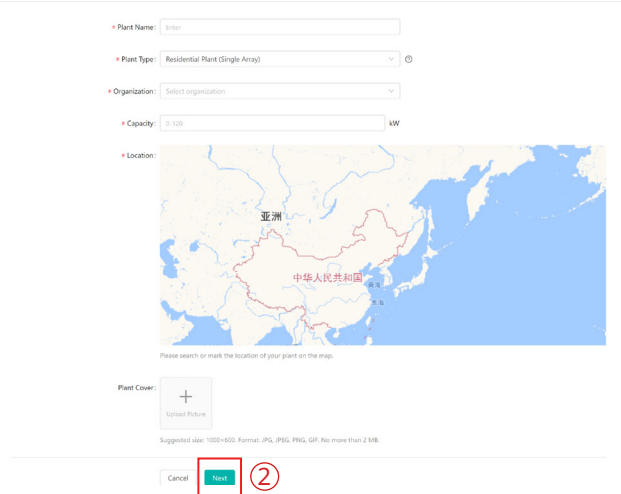
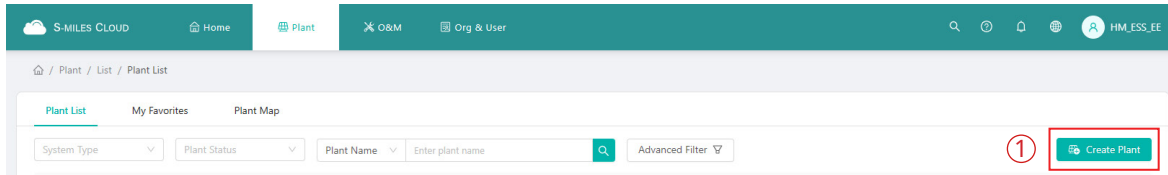
4.2 Plant Page

The Plant page includes the plant list, your favorites and the plant map.



4.2.1 Create a Plant

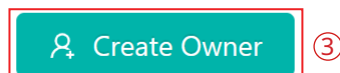
a. Click "Create Plant", fill in the basic information, and then click "Next".



b. Click "Create Owner", fill in the owner information, and then click "Confirm".



Please bind current owners or add new owners of the plant.



Create Owner X

* Login Account: [Select Another Owner](#)
Cannot be empty

* Password:

* Full Name:

Contact Number:

Email:

* The email address will be used to reset the password when you forget your password. We recommend that you enter an email address.

Cancel Confirm 4

c. Click "Next → Add Device", fill in the DTU serial number, and then the inverter serial number will be automatically recognized. After that, click "Next" to go to the final step.

← Owner (test12345)

Login Account	Name	Contact Number	Email	Creation Time	Action
test-2	test-2	██████████	██████████	2023-02-27 16:22:17	Edit Reset Password Remove

+ Create Owner

Cancel Next 5

← Add Device/Layout (test12345)

✓ Devices > 2 Layout Design > 3 Upload Installation Map

There is no device in this plant, please add.
+ Add Device 6

Add Device X

7 * DTU SN:

* Inverter SN:

ⓘ This DTU only supports auto-sync of device relationship. Make sure that the configuration has been completed in APP-Toolkit.

8

← **Add Device/Layout** (test12345)

DTU	Action
43010000000	Edit Delete
+ Add Device	

9

d. Fill in the plant regulation information and click "Confirm" to finish the plant creation.

← **Settings** (test12345)

Plant Regulation

Plant Revenue

Plant Name: test12345

Currency:

Electricity Price per Unit

Buy:

Sell:

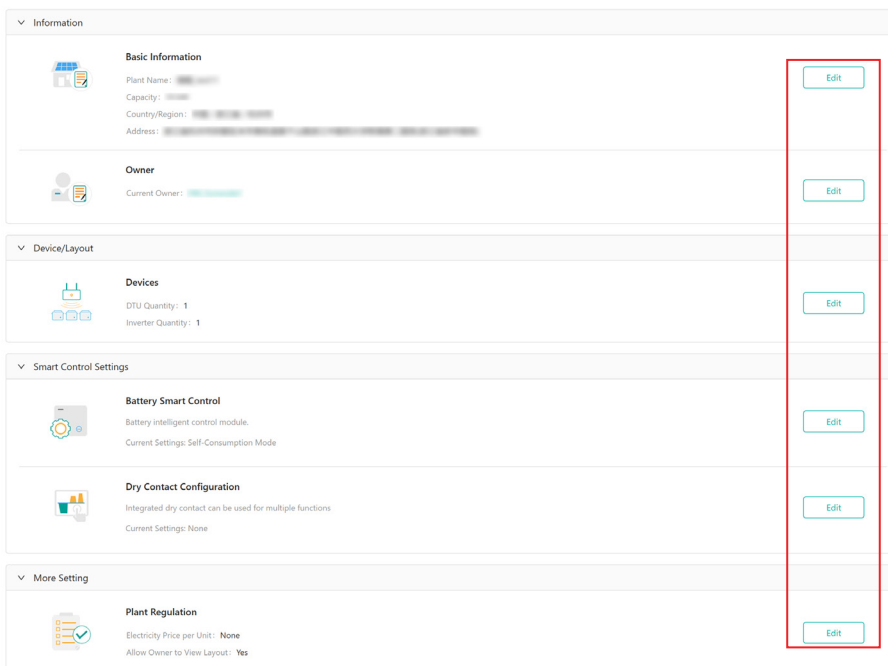
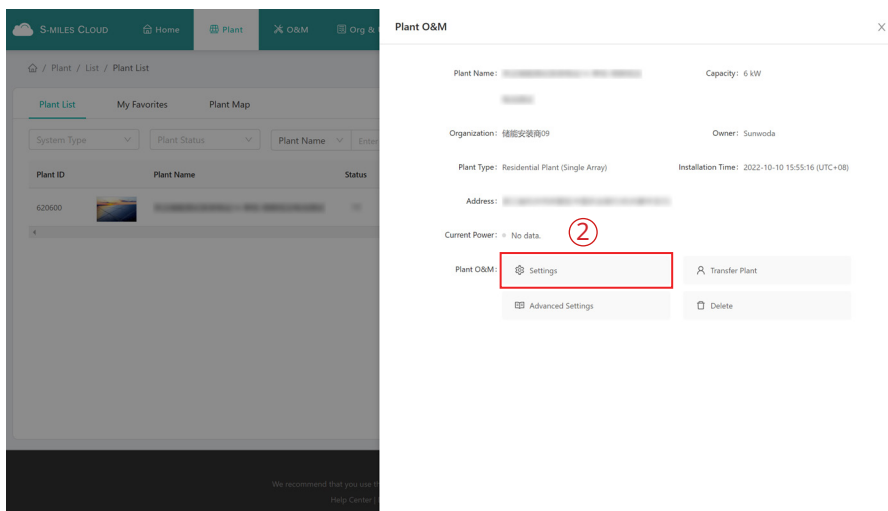
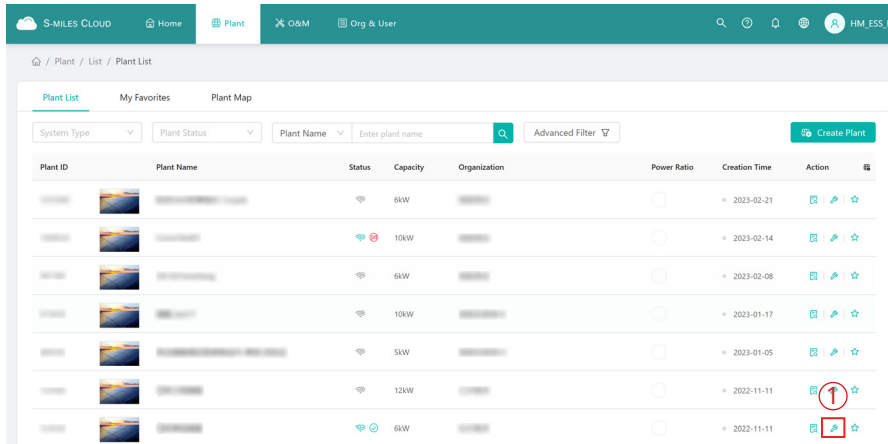
More Setting

10

11

4.2.2 Edit Plant Basic Information

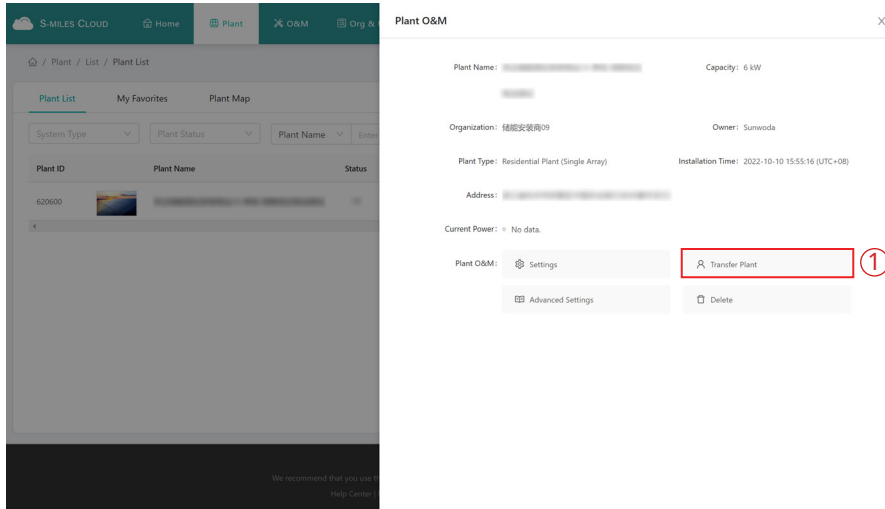
You can directly choose the plant you want to edit, or search it according to device name/ID, click the “Settings” button on the left side of the Plant O&M, and then edit the information you want to change.



* For details of Smart Control Settings, please refer to Chapter 5.

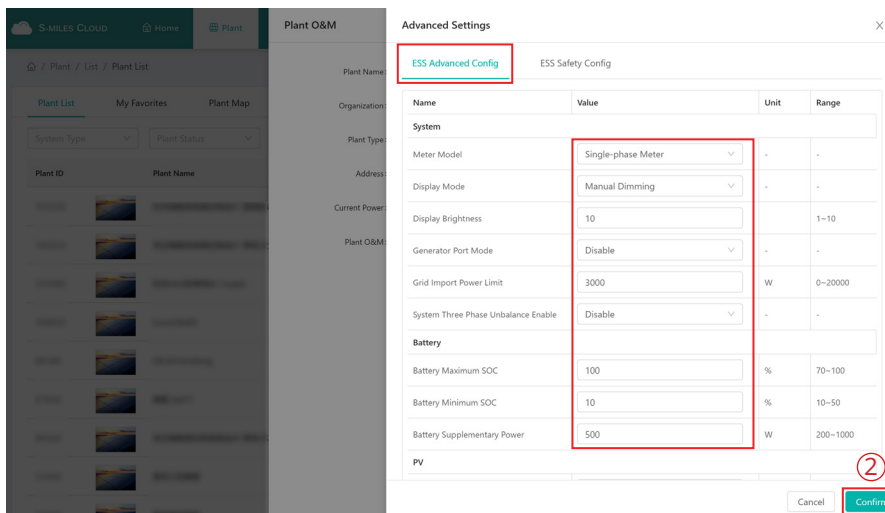
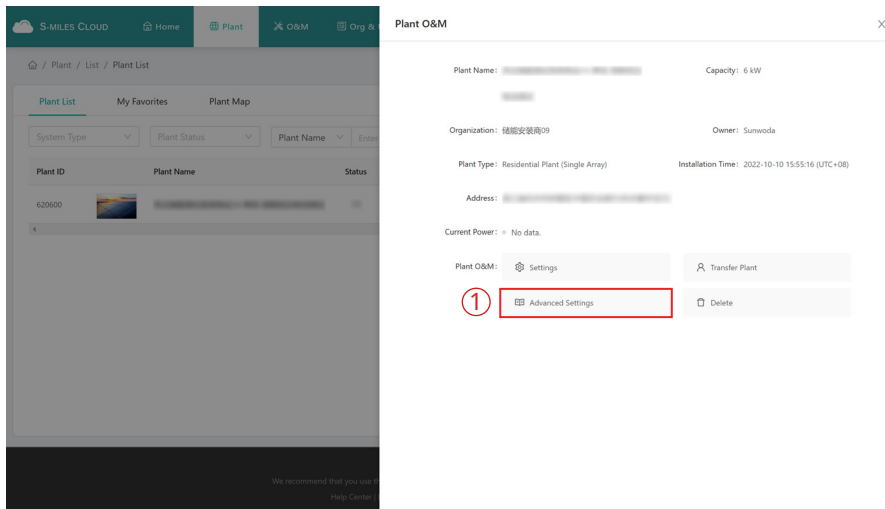
4.2.3 Transfer a PV Plant to Another Organization

Select "O&M" on the right side of the plant list, click the "Transfer Plant" button, choose the new organization that you want to transfer to, and then click "Confirm".

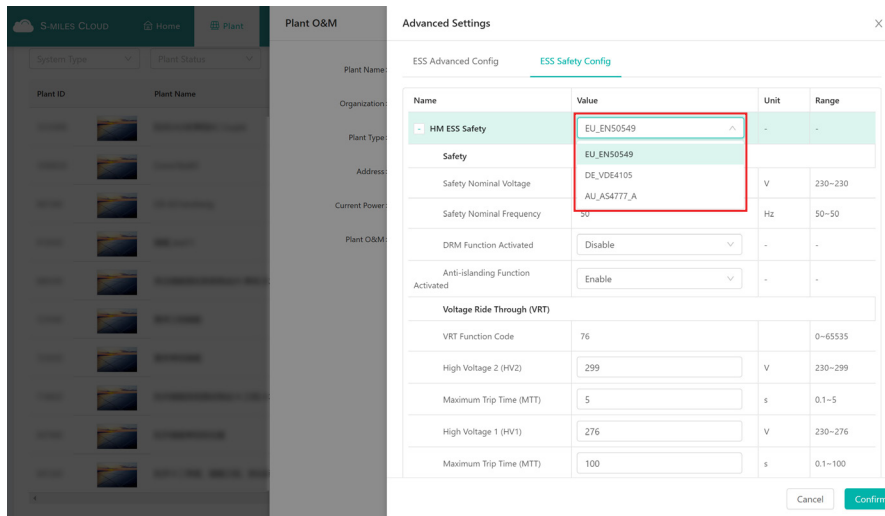


4.2.4 Update the Profile of Inverter

Choose the plant of which you want to update the profile, and then click the "Advanced Settings" button on the left side of the Plant O&M. You can change the parameters within the certain range, and then click "Confirm".

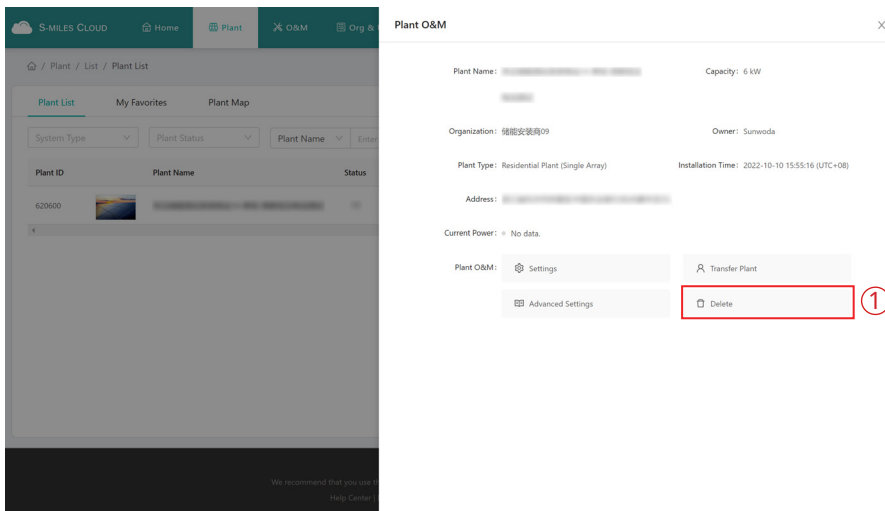


When ESS Safety Config is performed, please firstly choose corresponding grid code in your region, and in other regions, you can adjust parameters in accordance with local grid standard.



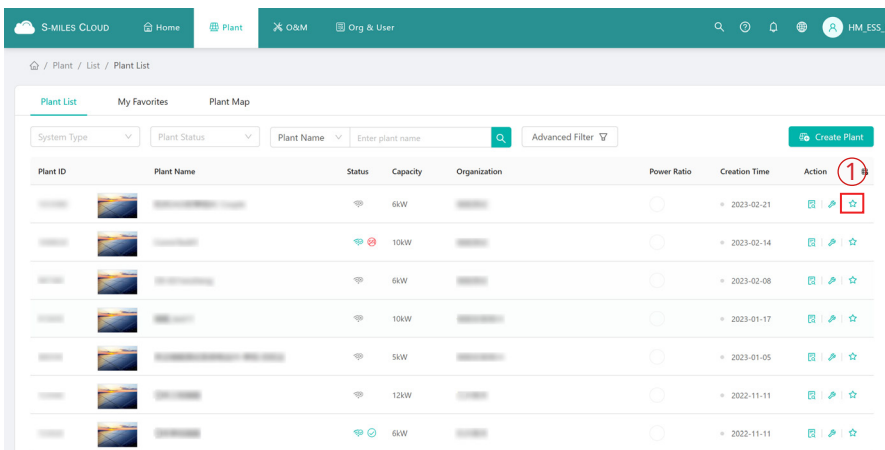
4.2.5 Delete a Plant

Choose the plant you want to delete, and then click the “Delete” button on the left side of the Plant O&M. To delete a plant, you will need to firstly delete all devices under this plant.



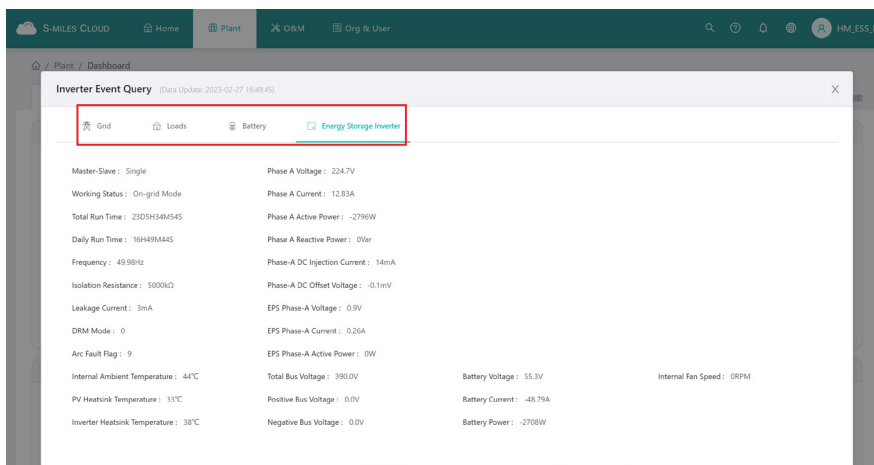
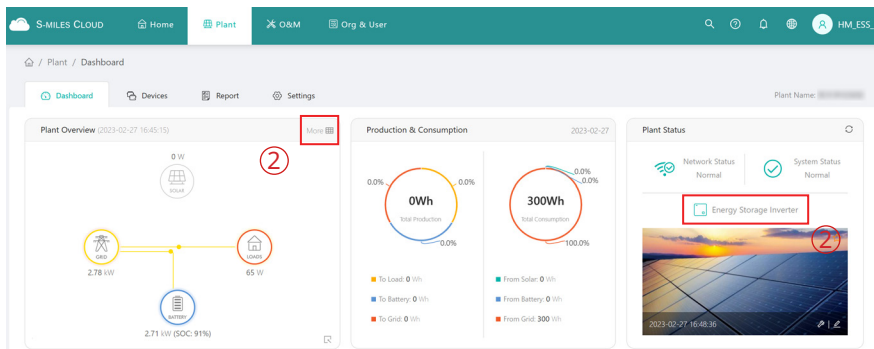
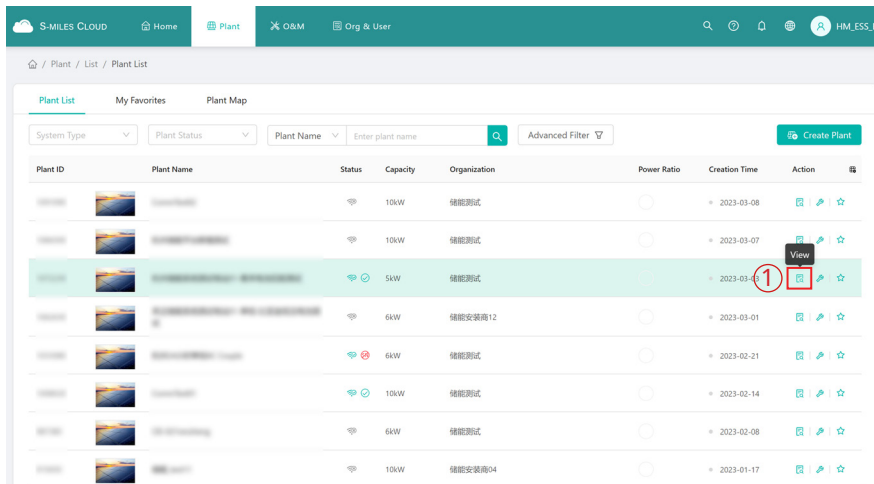
4.2.6 Add a Plant to Favorites

Choose the plant that you want to add to your favorites and click “Favorite”.



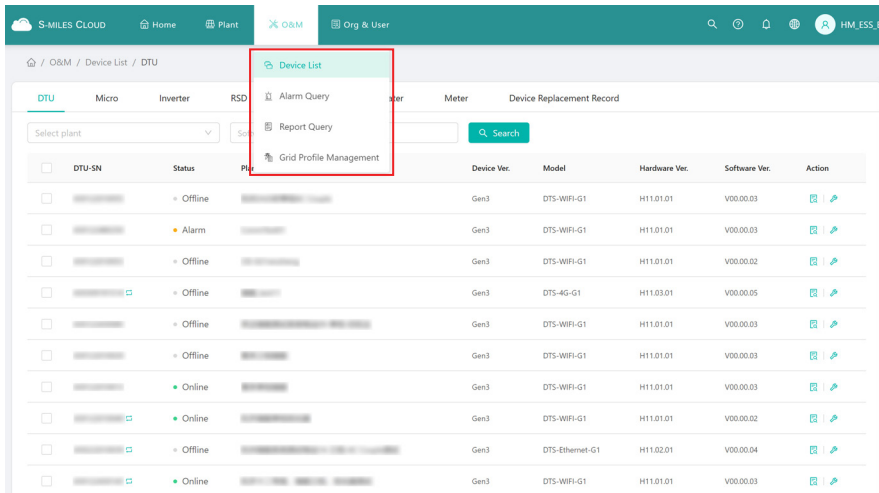
4.2.7 Check the Various Data of Device

Go to the PV plant page, select "View" and click "More" or "Energy Storage Inverter".



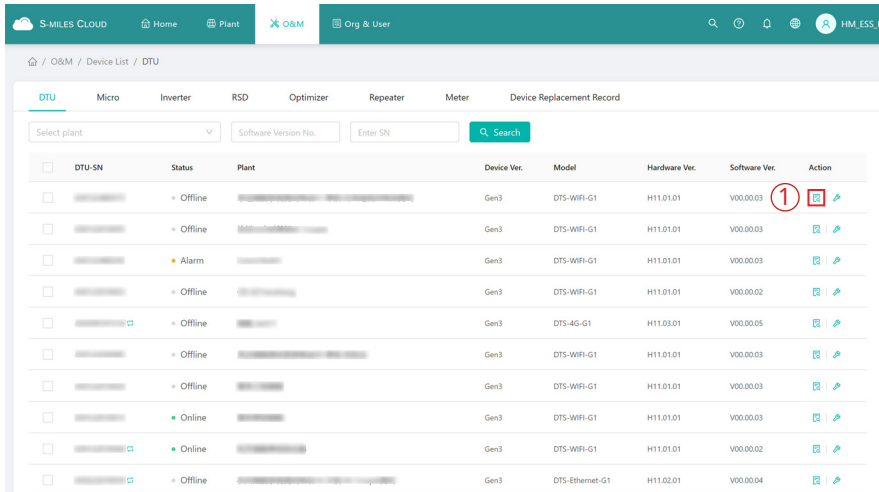
4.3 O&M

The O&M page includes device list, alarm query, report query and grid profile management.



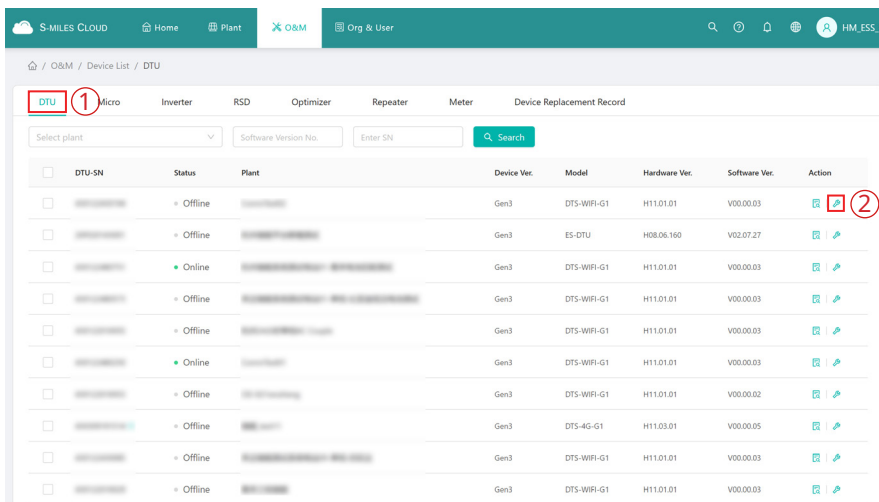
4.3.1 Device Information Query

Click "Device List → DTU", and then click "View" to view device details.



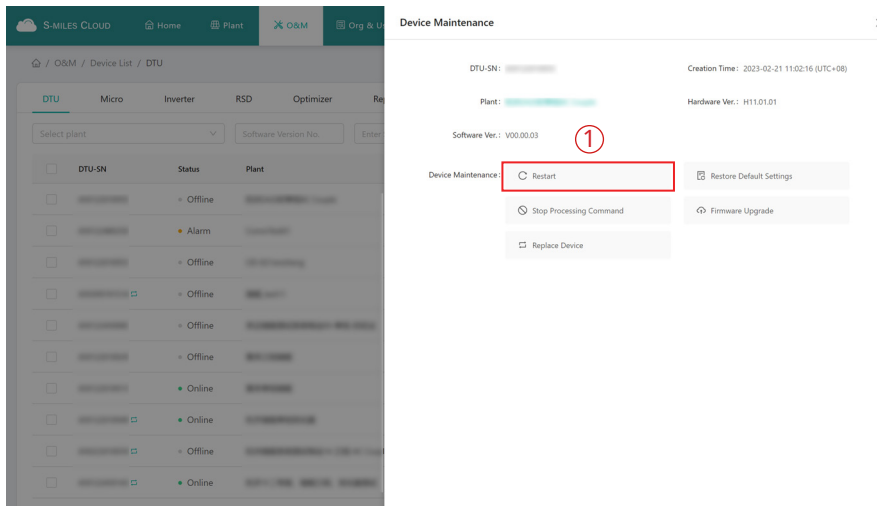
4.3.2 DTU Maintenance

Click "Device List → DTU", choose the DTU SN and click the "Device Maintenance".



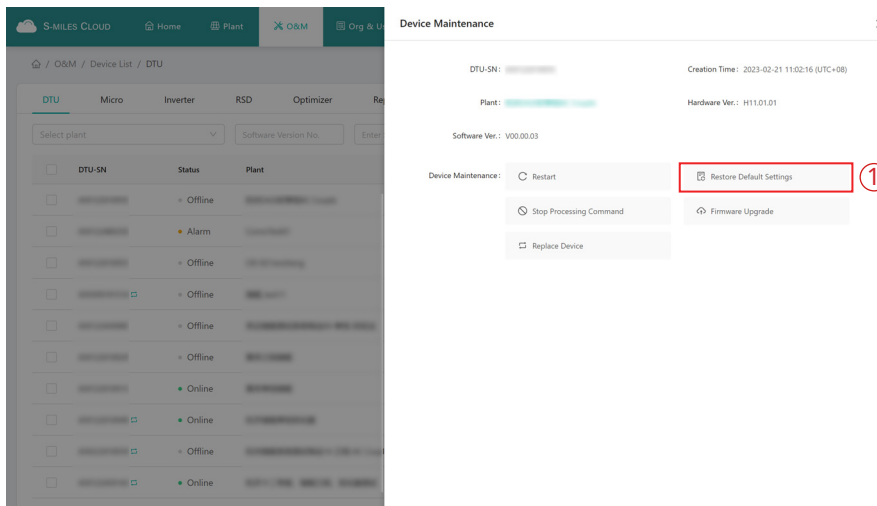
4.3.2.1 Restart the DTU

Click "Device List → DTU", choose the DTU SN, and then click "Device Maintenance → Restart".



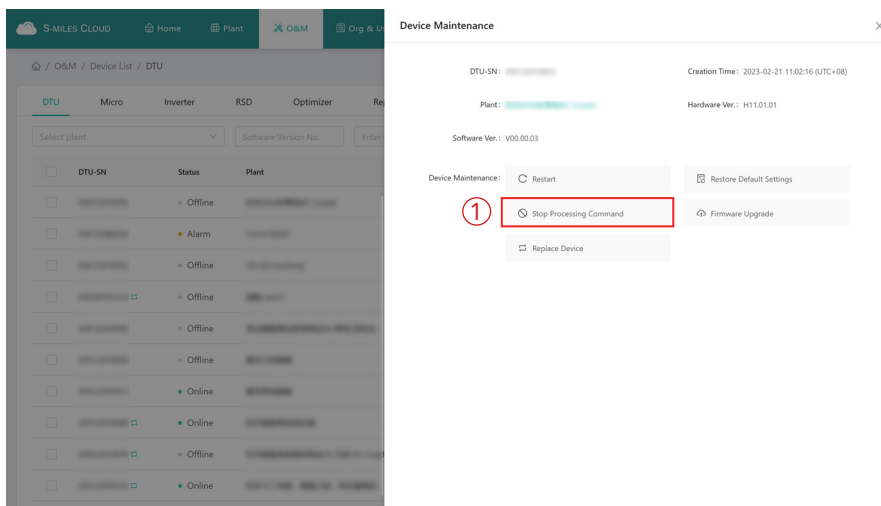
4.3.2.2 Restore the DTU Default Settings

Click "Device List → DTU", choose the DTU SN, and then click "Device Maintenance → Restore Default Settings".



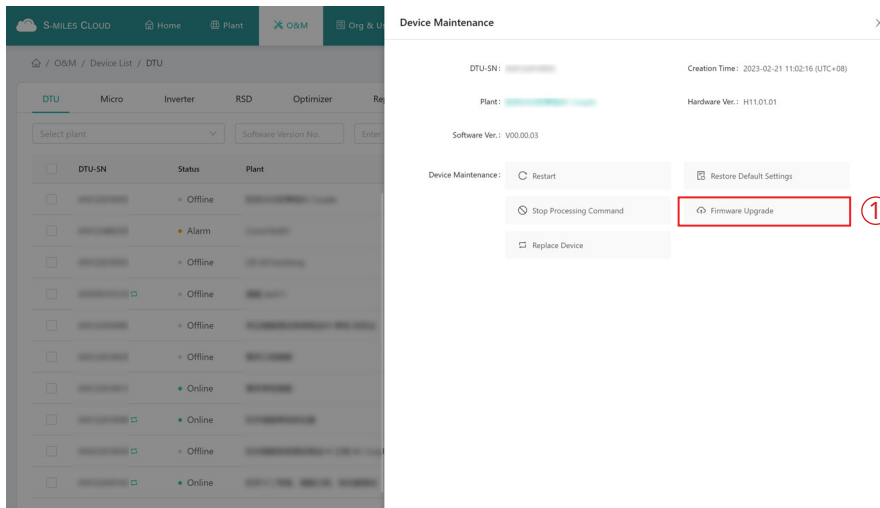
4.3.2.3 Stop the Processing Command of DTU

Click "Device List → DTU", choose the DTU SN, and then click "Device Maintenance → Stop Processing Command".



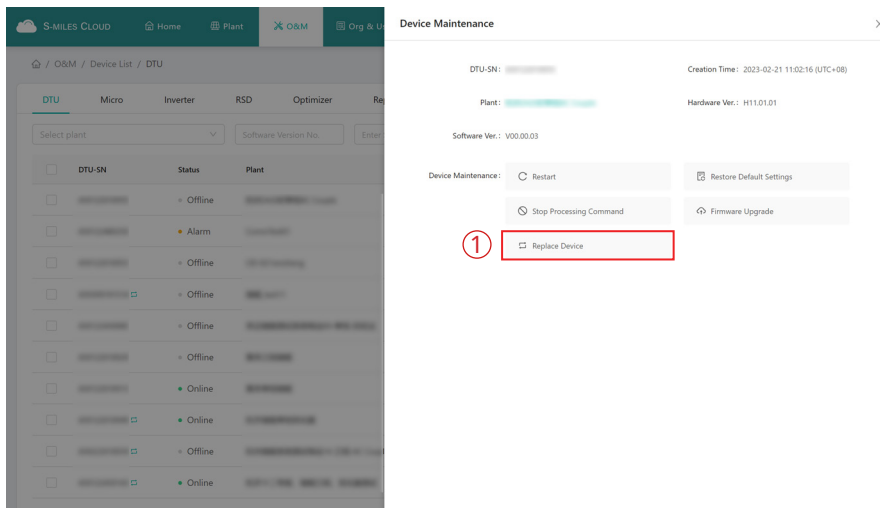
4.3.2.4 Upgrade the DTU Firmware

Click "Device List → DTU", choose the DTU SN, and then click "Device Maintenance → Firmware Upgrade".



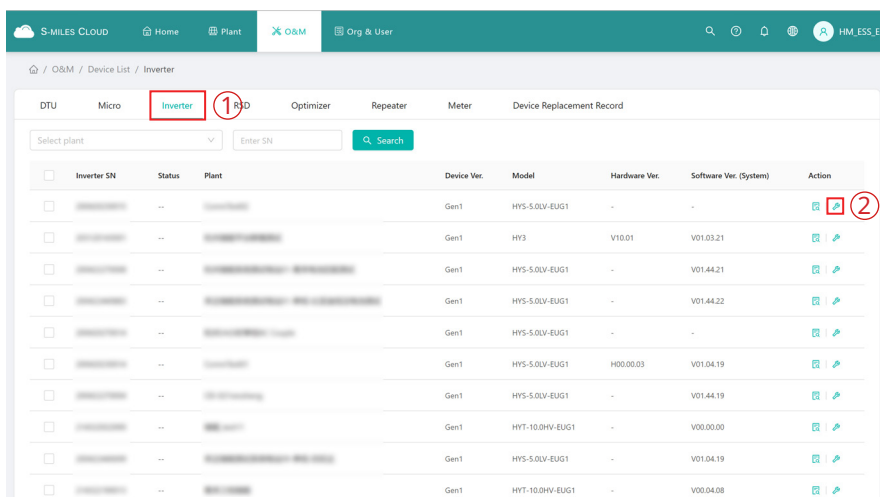
4.3.2.5 Replace the DTU

Click "Device List → DTU", choose the DTU SN, and then click "Device Maintenance → Replace Device".



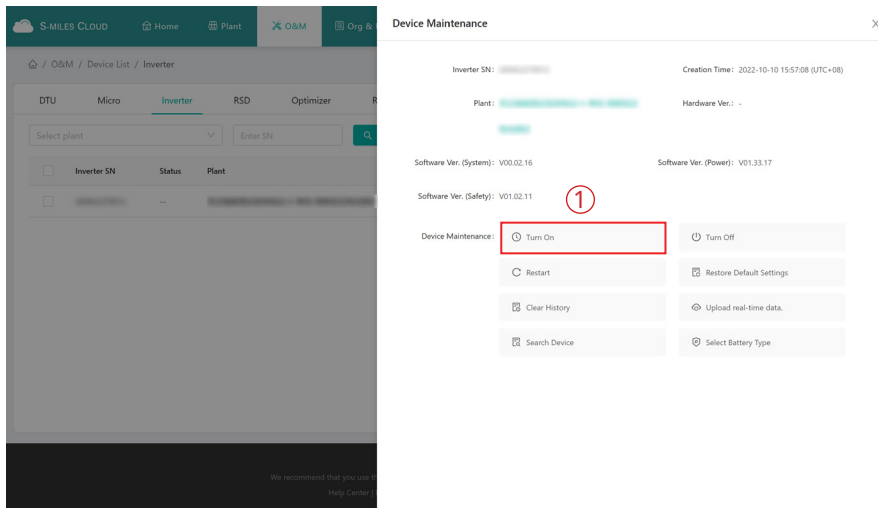
4.3.3 Inverter Maintenance

Click "Device List → Inverter", choose the Inverter SN and click "Device Maintenance".



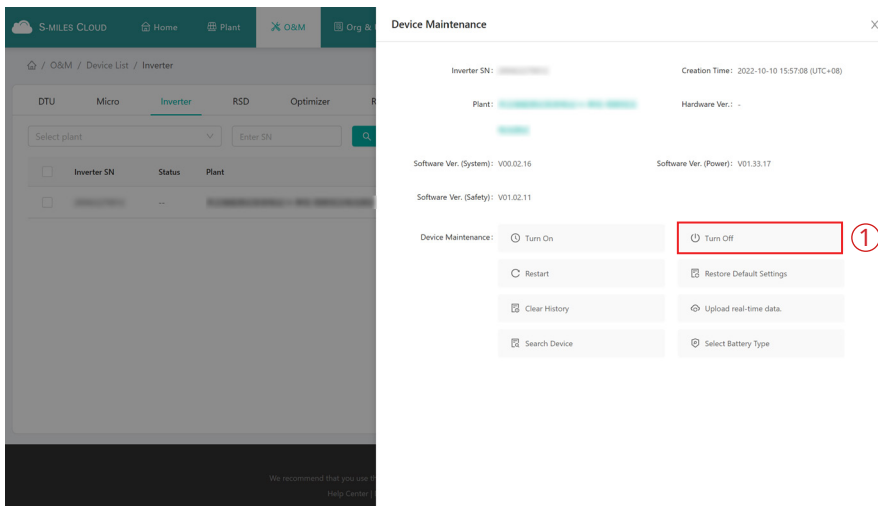
4.3.3.1 Turn on the Inverter

Click "Device List → Inverter", choose the Inverter SN, and then click "Device Maintenance → Turn On".



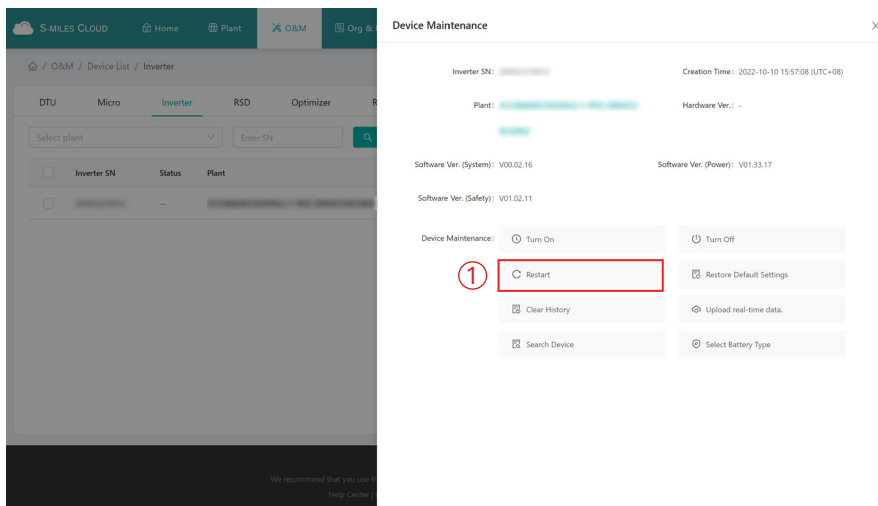
4.3.3.2 Turn off the Inverter

Click "Device List → Inverter", choose the Inverter SN, and then click "Device Maintenance → Turn Off".



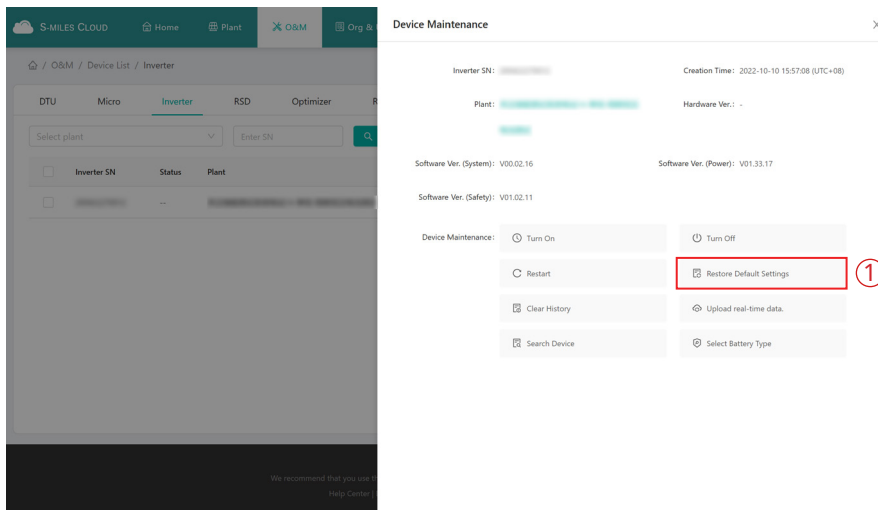
4.3.3.3 Restart the Inverter

Click "Device List → Inverter", choose the Inverter SN, and then click "Device Maintenance → Restart".



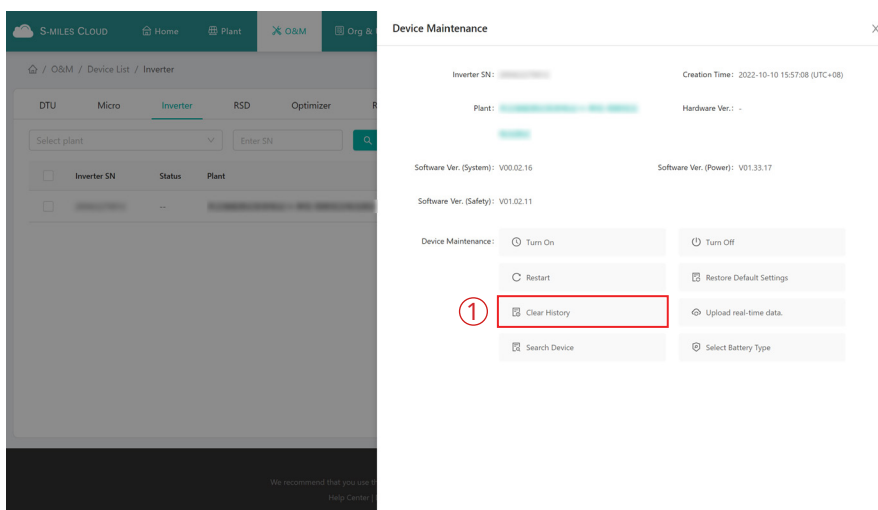
4.3.3.4 Restore the Inverter Default Settings

Click "Device List → Inverter", choose the Inverter SN, and then click "Device Maintenance → Restore Default Settings".



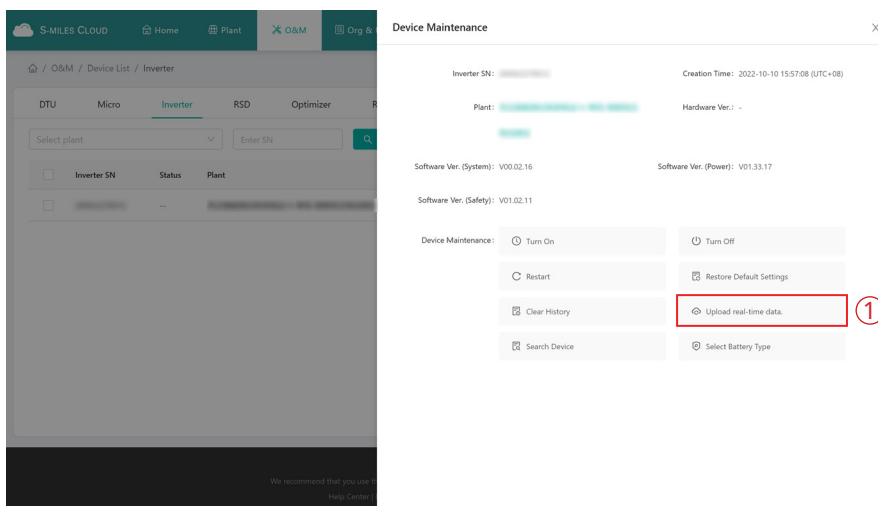
4.3.3.5 Clear the History of Inverter

Click "Device List → Inverter", choose the Inverter SN, and then click "Device Maintenance → Clear History".



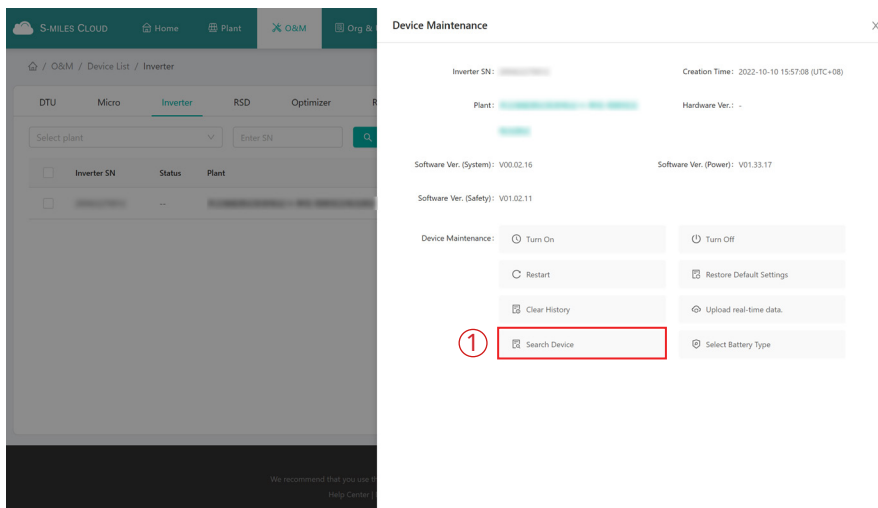
4.3.3.6 Upload the Real-time Data

Click "Device List → Inverter", choose the Inverter SN, and then click "Device Maintenance → Upload real-time data".



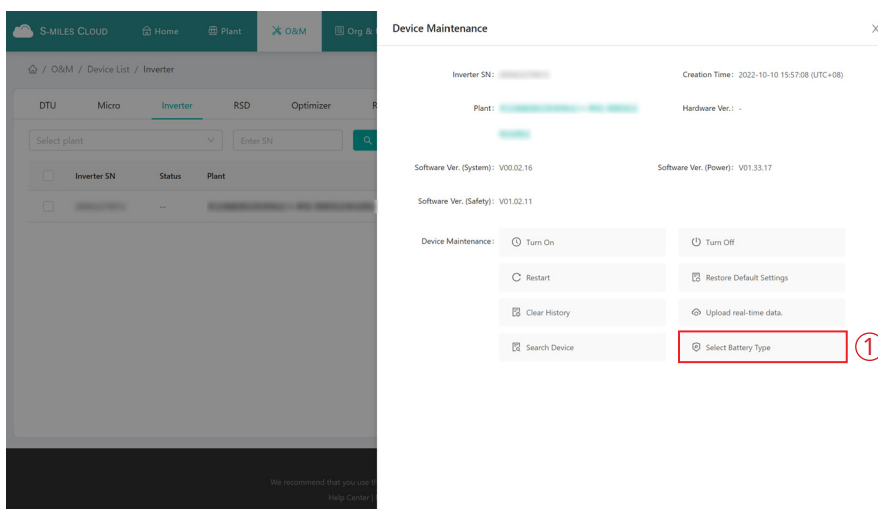
4.3.3.7 Search the Device

Click "Device List → Inverter", choose the Inverter SN, and then click "Device Maintenance → Search Device".



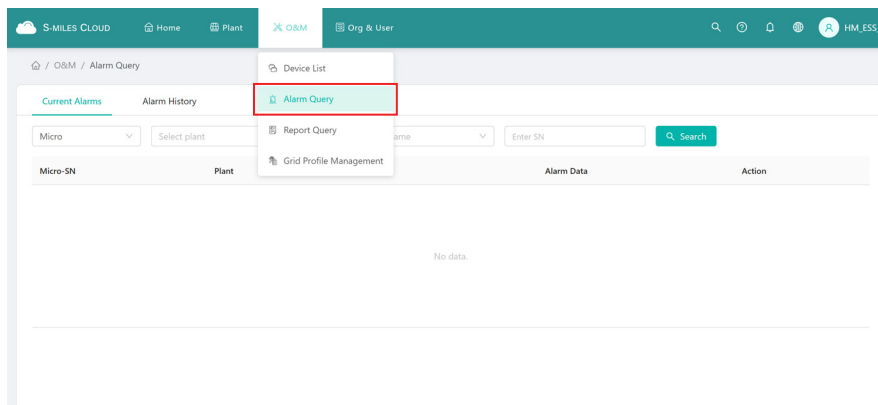
4.3.3.8 Select the Battery Type

Click "Device List → Inverter", choose the Inverter SN, and then click "Device Maintenance → Select Battery Type".



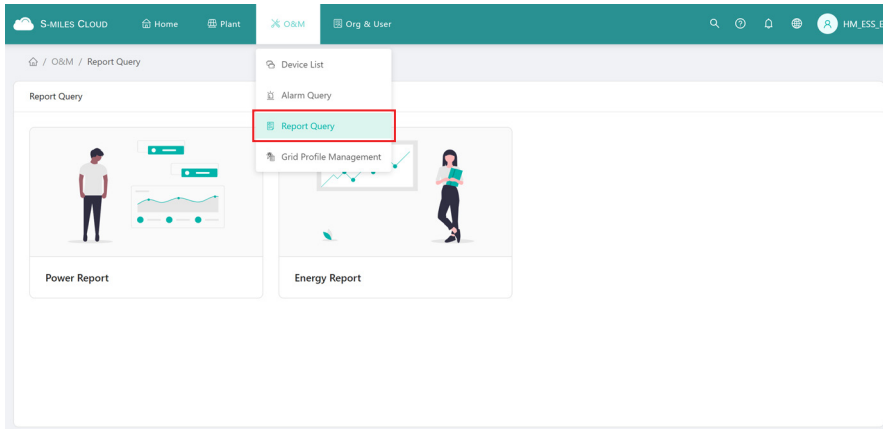
4.3.4 Alarm Query

Click "Alarm Query" to check the current alarms and alarm history.

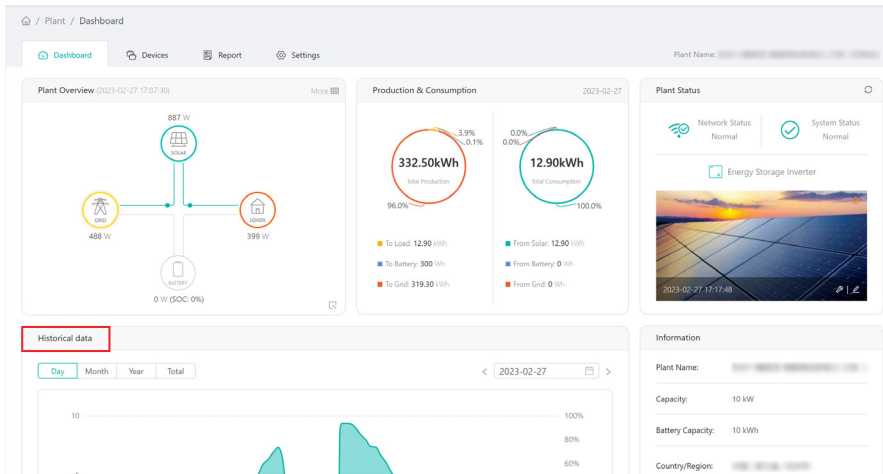


4.3.5 Report Query

Click "Report Query" to check the power report and energy report.

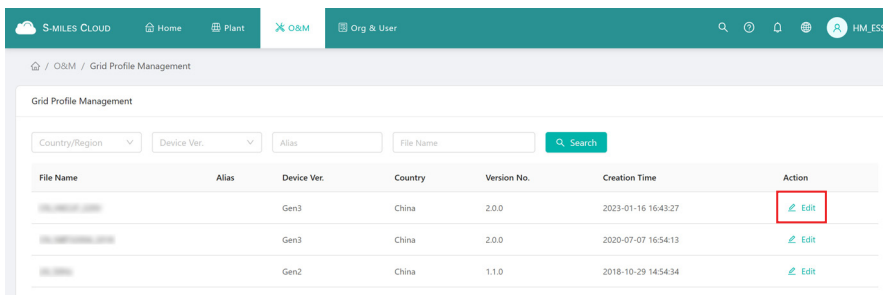


You can download the power report of the last 15 days and the energy report of any time. To download the power report beyond 15 days, please refer to the Plant Dashboard.



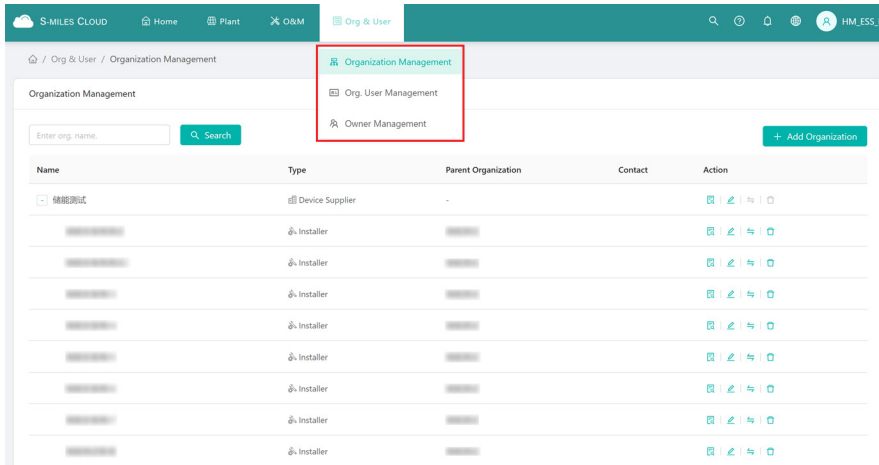
4.3.6 Grid Profile Management

Click "Grid Profile Management" to check the grid profile. And you can click "Edit" to edit the grid profile.



4.4 Org & User

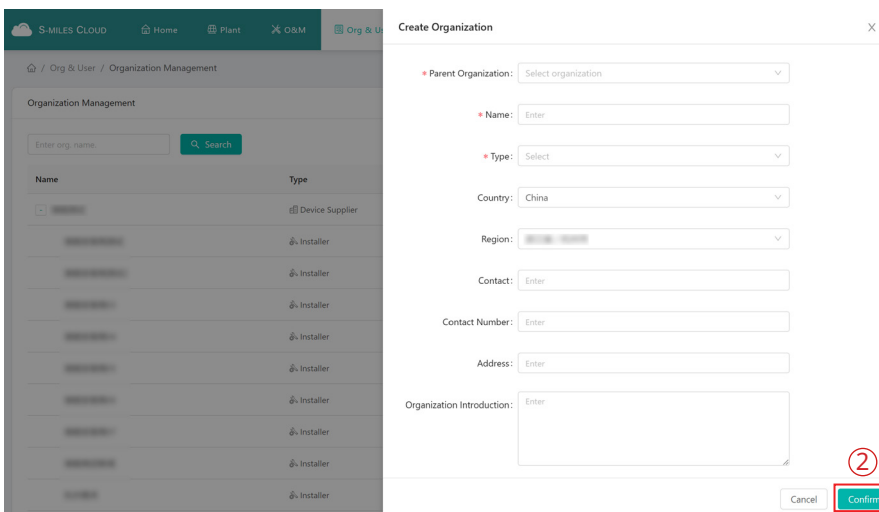
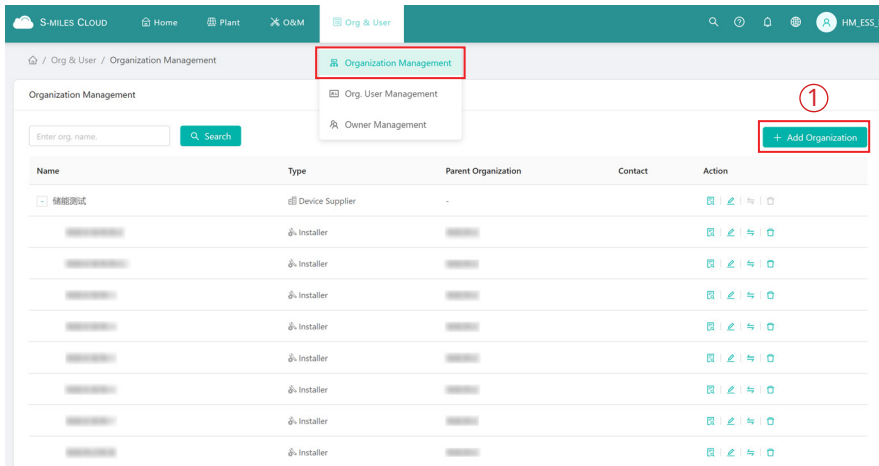
The Org & User page includes organization management, Org. User management and owner management.



4.4.1 Organization Management

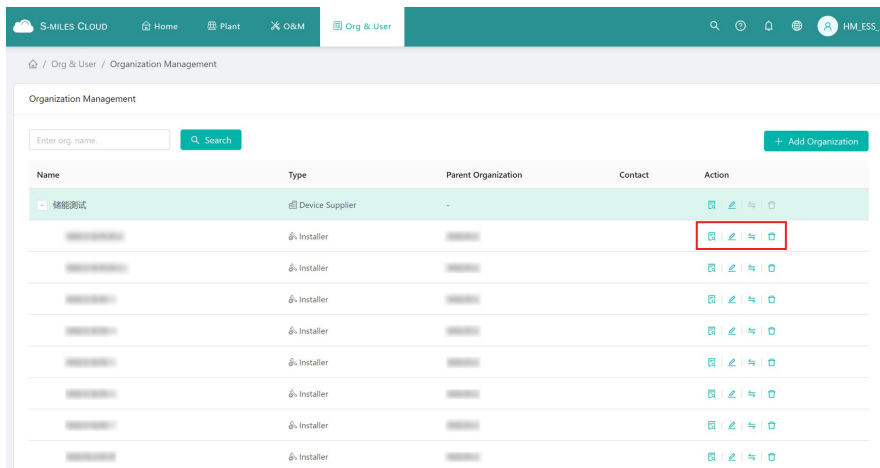
4.4.1.1 Create Organization

Click "Add Organization", fill in the details of organization user, and then click "Confirm" to complete account creation.



4.4.1.2 Organization Management

In this page, you can check, edit, transfer and delete the organization.



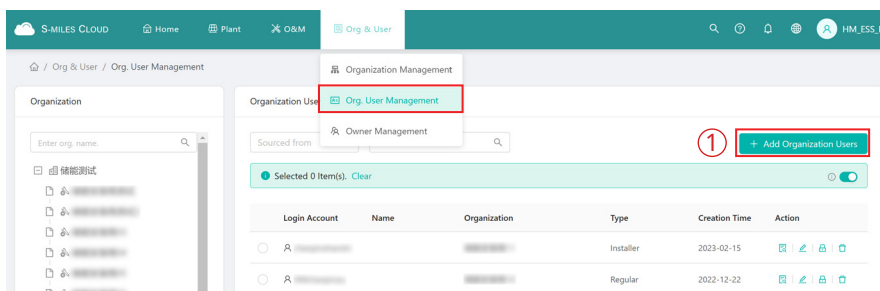
Note:

The PV plant cannot be transferred when one owner account is used by multiple PV plants. If one of the PV plants will be transferred, please firstly remove the owner account from other PV plants.

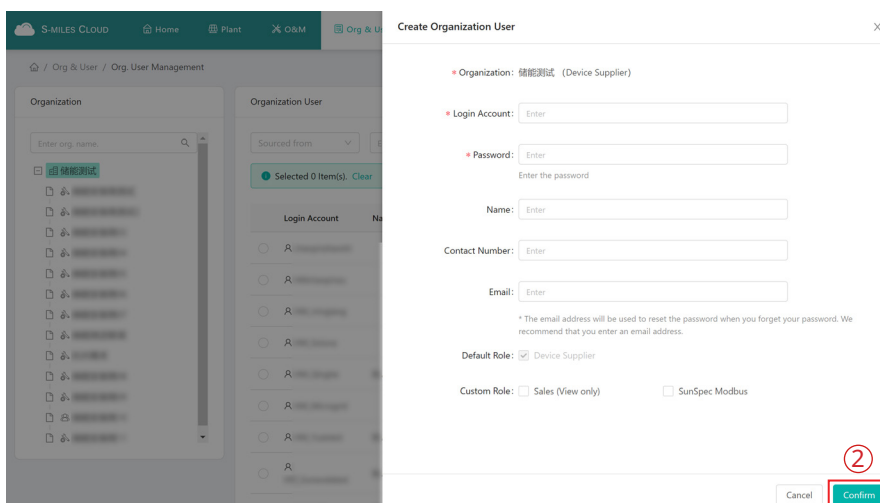
4.4.2 Org. User Management

In this page, you can add organization users:

- a. Select "Org. User Management", select and double click the organization name you just created on the left, and then click "Add Organization Users".

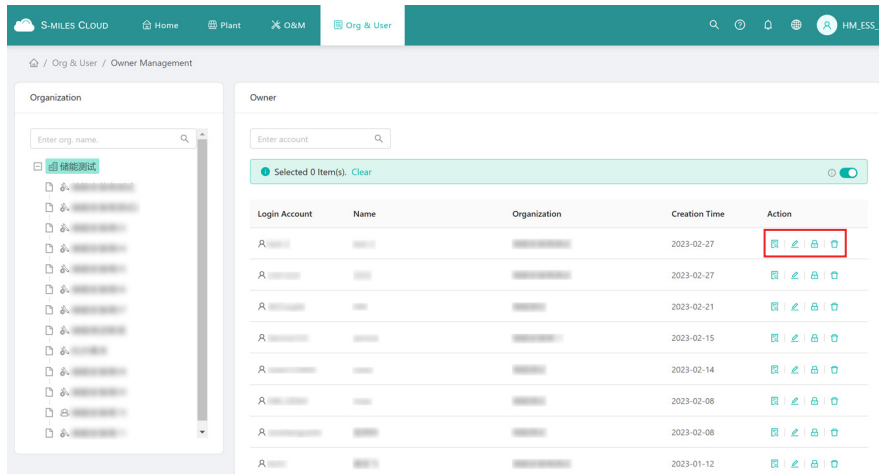


- b. Fill in the details of organization user and click "Confirm" to complete account creation.



4.4.3 Owner Management

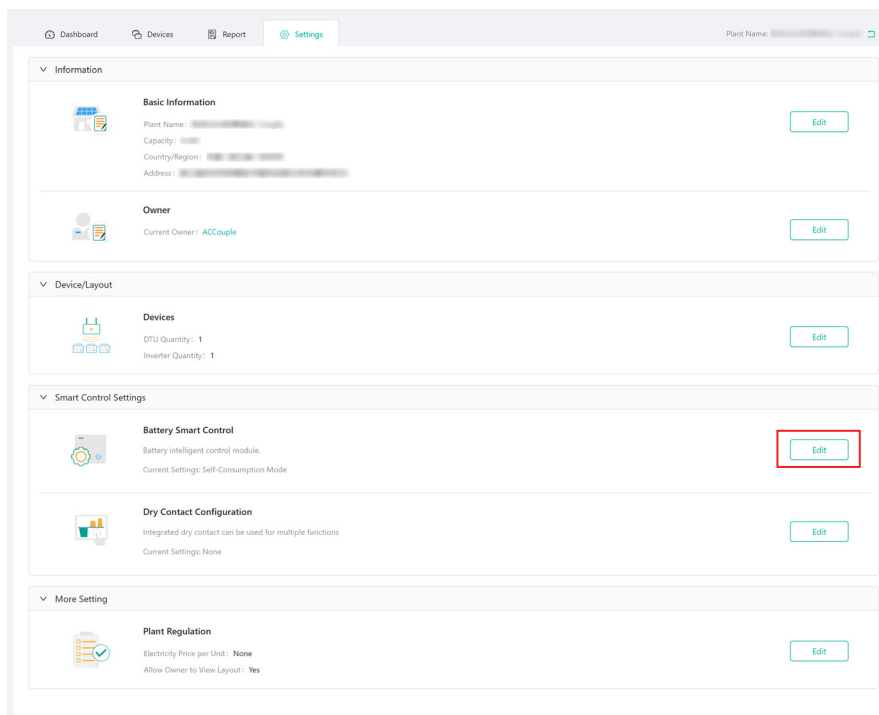
In this page, you can check and edit the account information, reset the account password and delete the account.



5. Smart Control Settings

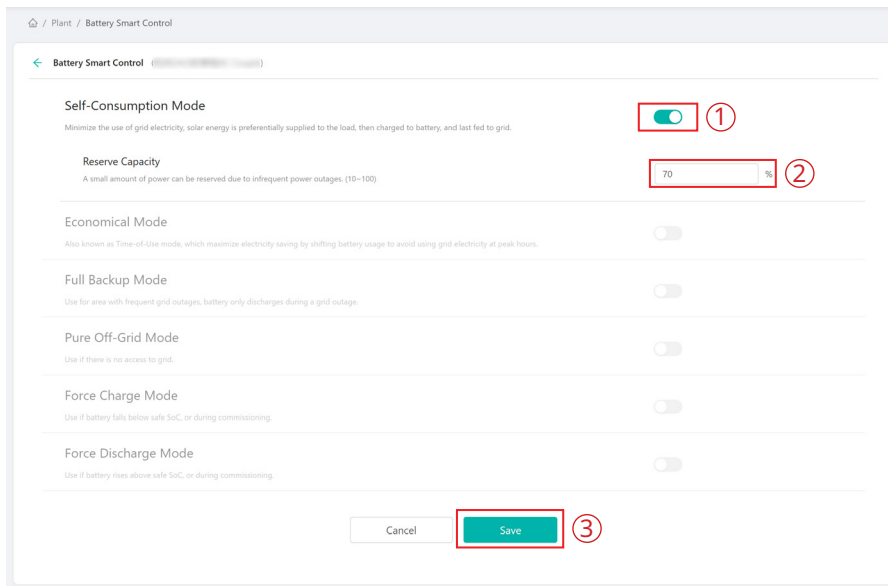
5.1 Battery Smart Control

Choose the plant where you want to change the system mode and click “Settings”. Click the “Edit” button of Battery Smart Control under Smart Control Settings. Only one control mode can be selected at a time.



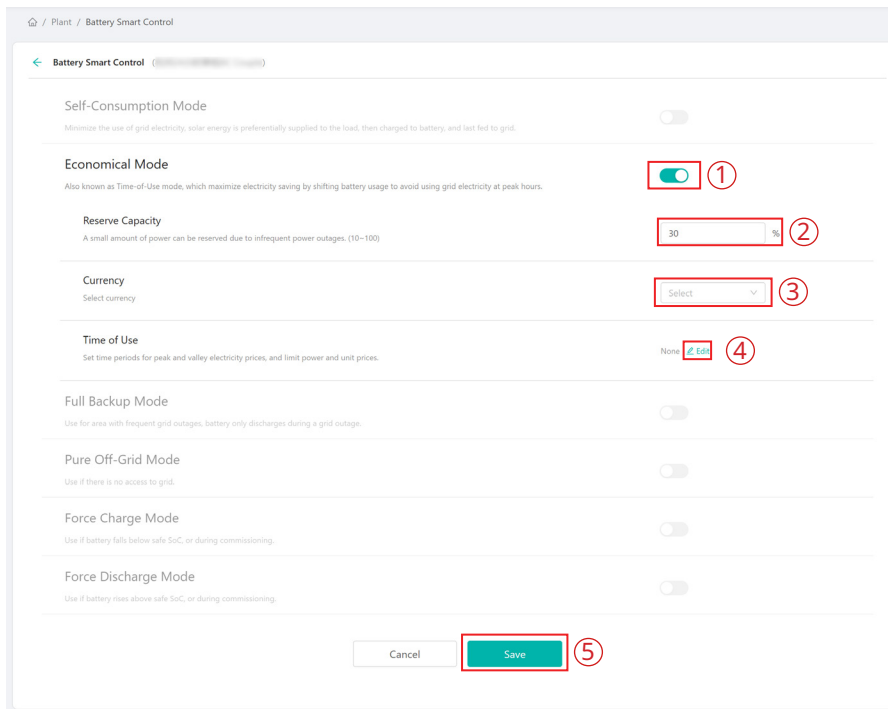
5.1.1 Self-consumption Mode

In the daytime, solar energy supports the loads firstly, and surplus energy is stored in the battery. When the battery is fully charged or reaches the maximum charge power, the surplus energy is fed into grid (or limited if required). At night, the battery discharges for the loads firstly, and the grid will supply the loads once the battery power is not enough. In this mode, battery cannot be charged from grid at night. The self-consumption mode can reduce the use of grid power. Solar energy is preferentially supplied to the load, charged to the battery, and fed into the grid last. You can set reserve capacity within the certain range in the case of infrequent power outages, and then click “Save”.



5.1.2 Economical Mode

In this mode, battery charging and discharging periods need to be defined. Meanwhile, the battery can be forced to charge from the grid during the preset charging time. For instance, the battery could be charged or discharged according to valley or peak electricity prices. You can set reserve capacity within the certain range in the case of infrequent power outages, select the type of currency you need, and then click “Save”. You can set different time periods to be more flexible to save costs of electricity. Click “Edit” to set the time period for peak, low and partial peak grid prices in different seasons or dates, but you can just add up to four time periods, and then click “Save”.



Electricity rate 1

Select a time period. ⓘ To

Time Range 1

Peak Hour Start: End:
Electricity Price per Unit Buy: Sell:

Off-Peak Hour Start: End:
Electricity Price per Unit Buy: Sell:

Partial-Peak Hour Electricity Price per Unit Buy: Sell:

Time Range 2

Peak Hour Start: End:
Electricity Price per Unit Buy: Sell:

Off-Peak Hour Start: End:
Electricity Price per Unit Buy: Sell:

Partial-Peak Hour Electricity Price per Unit Buy: Sell:

+ Add Item ①

②

Save

If you want to delete one of the time periods, just click “delete” in the top right corner and click “Save”.

Electricity rate 2 ▲ 🗑️ ①

Select a time period. ⓘ To

Time Range 1

Peak Hour Start: End:
Electricity Price per Unit Buy: Sell:

Off-Peak Hour Start: End:
Electricity Price per Unit Buy: Sell:

Partial-Peak Hour Electricity Price per Unit Buy: Sell:

Time Range 2

Peak Hour Start: End:
Electricity Price per Unit Buy: Sell:

Off-Peak Hour Start: End:
Electricity Price per Unit Buy: Sell:

Partial-Peak Hour Electricity Price per Unit Buy: Sell:

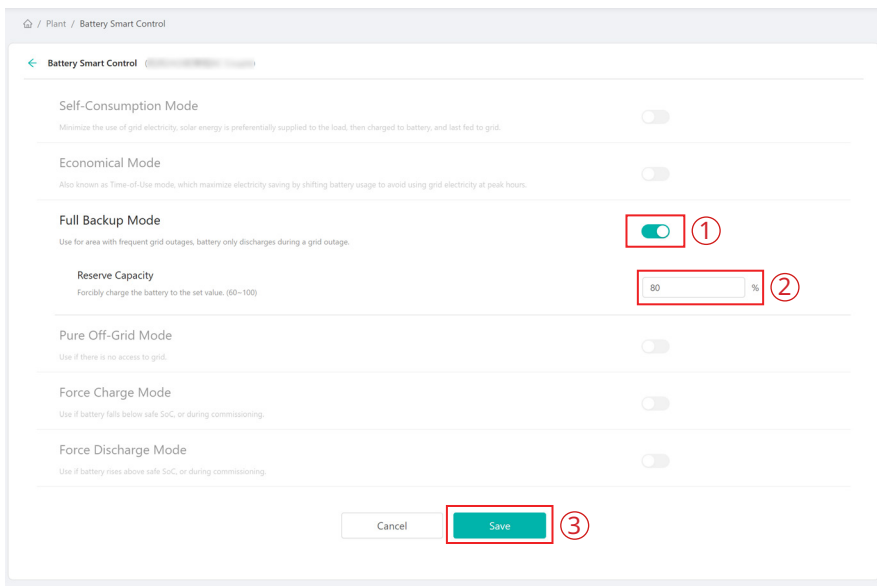
+ Add Item

②

Save

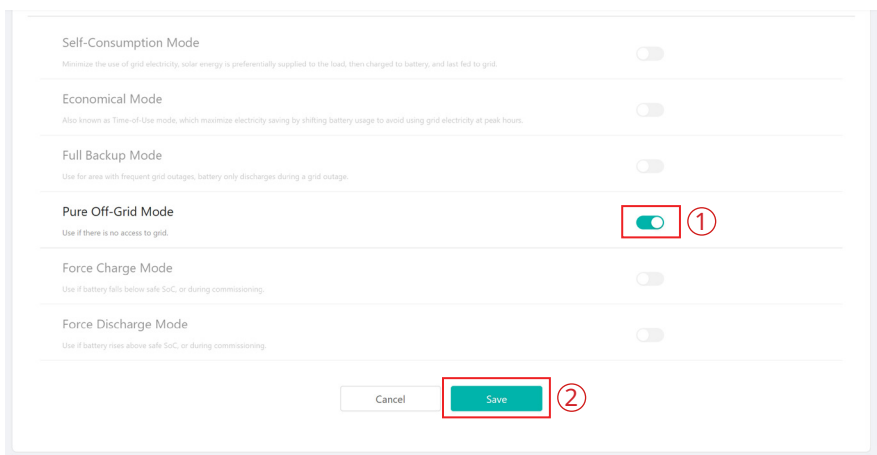
5.1.3 Full Backup Mode

Full backup mode can be selected when the grid frequently breaks down. The battery will be forced to charge to a set capacity so that it has enough power to support the electricity consumption in daily life when the inverter is in off-grid mode. You can also set the reserve capacity within the certain range and click "Save".



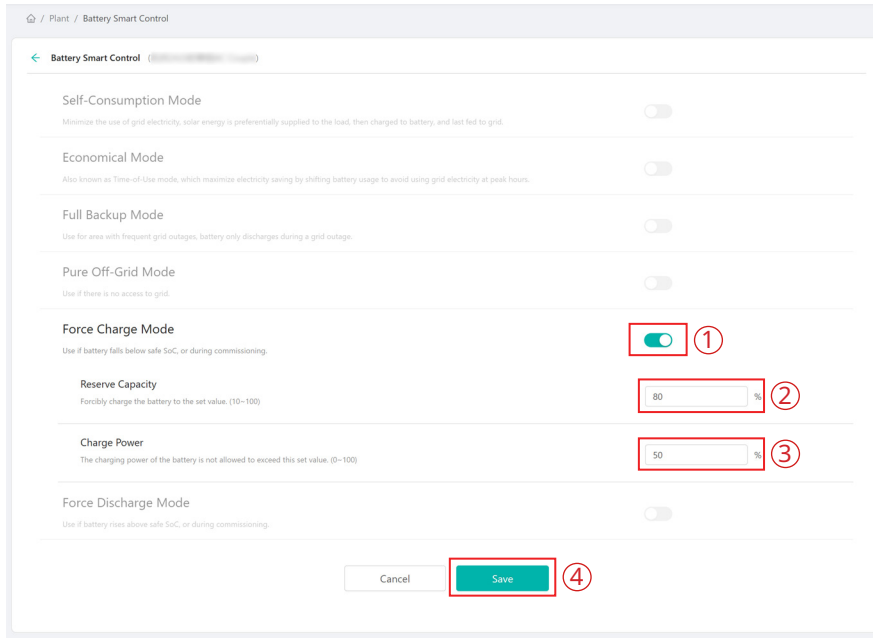
5.1.4 Pure Off-grid Mode

When the system is not connected to the grid, you can choose the pure off-grid mode and click "Save".



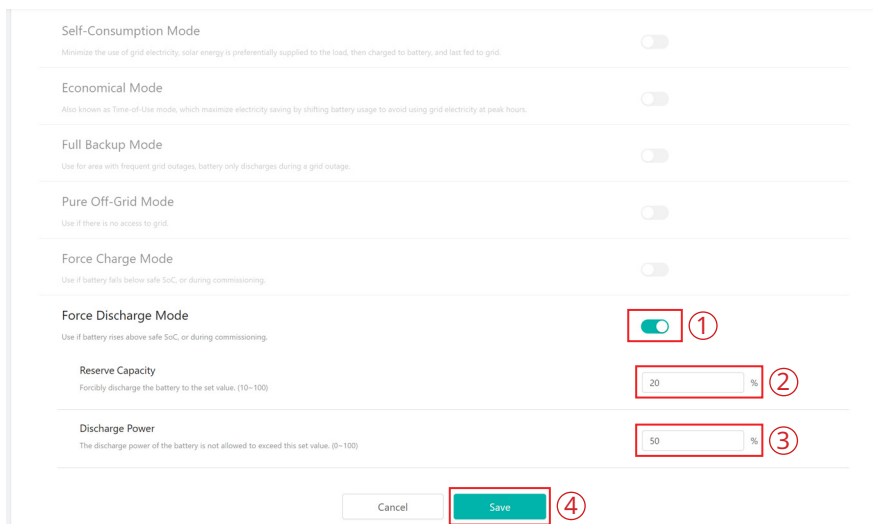
5.1.5 Force Charge Mode

The force charge mode can be used during the commissioning of inverter or when the battery capacity falls below the value of safety SoC. You can set the reserve capacity within the certain range. If the battery capacity is lower than the setting, the battery will be forcibly charged. And you can set the charging power of battery if needed. Finally, save the values you have changed.



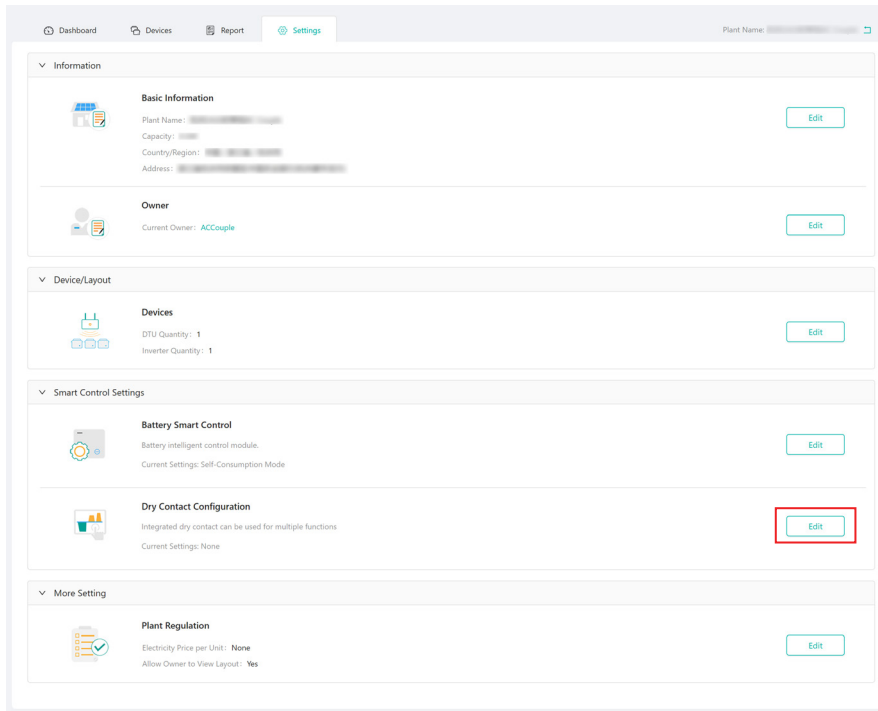
5.1.6 Force Discharge Mode

The force discharge mode can be used during the commissioning of inverter or when the battery capacity rises above the value of safety SoC. You can set the reserve capacity within the certain range. If the battery capacity is higher than the setting, the battery will be forcibly discharged. And you can set the discharge power of battery if needed. Finally, save the values you have changed.



5.2 Dry Contact Configuration

Click the “Edit” button of Dry Contact Configuration under Smart Control Settings. But just one mode can be selected at a time.

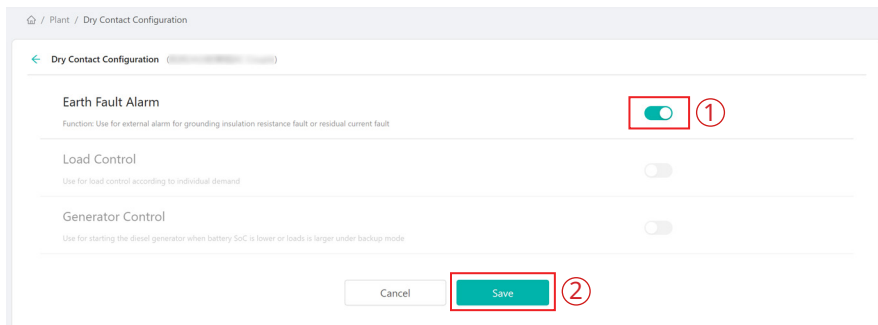


Note:

1. The current of the DO dry contact should not be larger than 2 A.
2. An AC contactor must be installed between the inverter and the load.
3. After the inverter is powered off, the AC contactor should be adjusted manually to control the load.

5.2.1 Set Earth Fault Alarm

Disable the external alarm caused by grounding insulation resistance fault or residual current fault when the load is connected.



5.2.2 Set the Working Mode of Load

This setting is to control whether the load is working or not. There are four modes available as follows.

- (1) **Switch Mode:** Manually turn on or turn off the dry contact.
- (2) **Time Mode:** Set the time period for the dry contact to work. The dry contact is closed during this set time and disconnected at other times.
- (3) **Intelligent Mode:** Because the energy generated by PV fluctuates a lot, this mode is to make the dry contact avoid being turned on and off frequently. The dry contact will only be turned on when the residual energy generated by the PV exceeds the power set by the load within the set time period. You can set the minimum run time and the nominal power of the dry contact.
- (4) **Backup Load Smart Control:** The unnecessary dry contact will be turned off in off-grid situation when the battery capacity is lower than the set SoC value. You can set the value of protection SoC if needed.

Plant / Dry Contact Configuration

← Dry Contact Configuration

Earth Fault Alarm
Function: Use for external alarm for grounding insulation resistance fault or residual current fault.

Load Control
Use for load control according to individual demand. **1**

Switch Mode Time Mode Intelligent Mode Backup Load Smart Control

Generator Control
Use for starting the diesel generator when battery SoC is lower or loads is larger under backup mode.

Cancel Save **2**

← Dry Contact Configuration

Earth Fault Alarm
Function: Use for external alarm for grounding insulation resistance fault or residual current fault.

Load Control
Use for load control according to individual demand. **1**

Switch Mode Time Mode Intelligent Mode Backup Load Smart Control

Time Range: Mon X Tue X Wed X Thu X Fri X Time Range: Sat X Sun X

Time Period1: 00:00 To 06:00 Time Period1: 00:00 To 12:00

Time Period2: 00:00 To 07:00 Time Period2: 00:00 To 15:00

Generator Control
Use for starting the diesel generator when battery SoC is lower or loads is larger under backup mode.

Cancel Save **2**

Earth Fault Alarm
Function: Use for external alarm for grounding insulation resistance fault or residual current fault.

Load Control
Use for load control according to individual demand. **1**

Switch Mode Time Mode Intelligent Mode Backup Load Smart Control

Time Range: Mon X Tue X Wed X Thu X Time Range: Fri X Sat X

Time Period: 00:00 To 17:00 Time Period: 00:00 To 12:00

Load Consumption Time: 30 Minute (10-1440) Nominal Power of Load: 1.00 kW (1-9999)

Generator Control
Use for starting the diesel generator when battery SoC is lower or loads is larger under backup mode.

Cancel Save **2**

Plant / Dry Contact Configuration

← Dry Contact Configuration

Earth Fault Alarm
Function: Use for external alarm for grounding insulation resistance fault or residual current fault.

Load Control
Use for load control according to individual demand. **1**

Switch Mode Time Mode Intelligent Mode Backup Load Smart Control

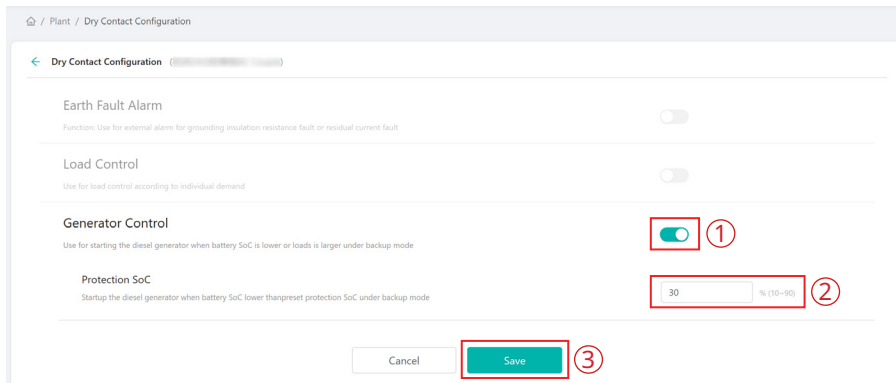
Protection SoC: 10 % (10-90)

Generator Control
Use for starting the diesel generator when battery SoC is lower or loads is larger under backup mode.

Cancel Save **2**

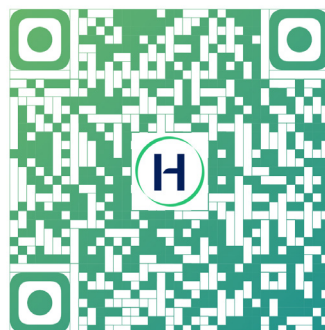
5.2.3 Generator Control

Generator control is used when there is higher power on the load side or lower battery capacity in off-grid mode. You can set the value of protection SoC within the certain range if needed. When the battery capacity is below the set protection SoC, the generator will work.





S-Miles Installer



S-Miles End-user

Floor 6-10, Building 5, 99 Housheng Road, Gongshu District,
Hangzhou 310015, P. R. China
+86 571 2805 6101

General inquiry: info@hoymiles.com
Technical support: service@hoymiles.com

Visit <https://www.hoymiles.com/> for more informations.